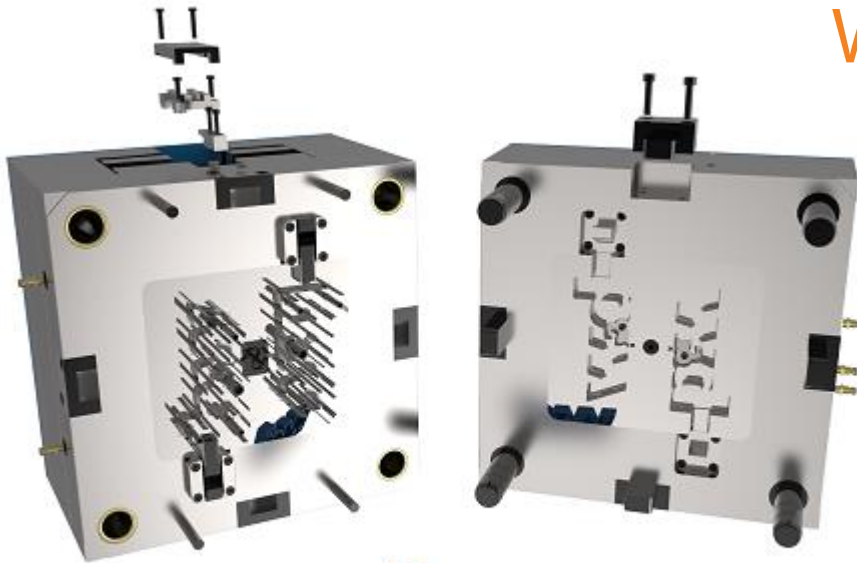


# EMX 11.0.4.1

What's New?



# Enhancements

---

## New Function in Bill of Materials:

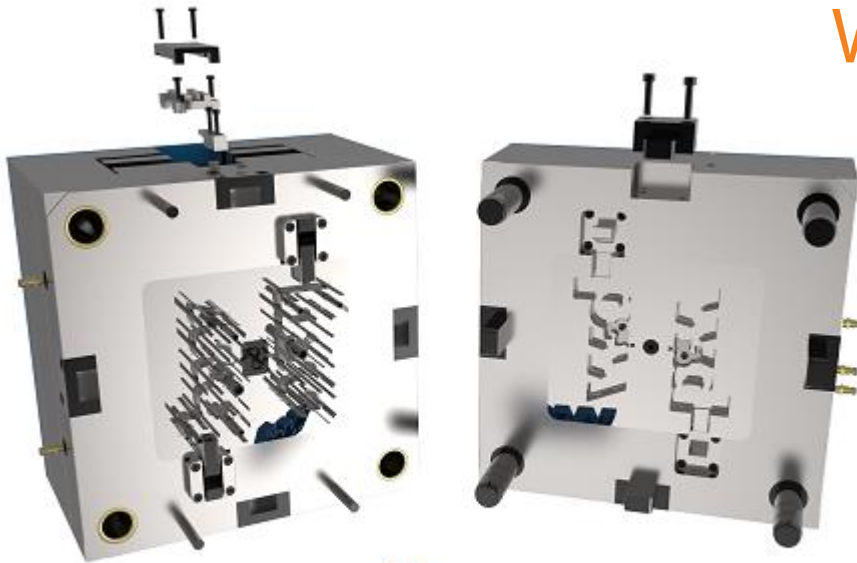
- All balloons on drawing can be deleted with one click

## STRACK components updated, new guide components

- Guides: Z4412, Z4415, Z4416

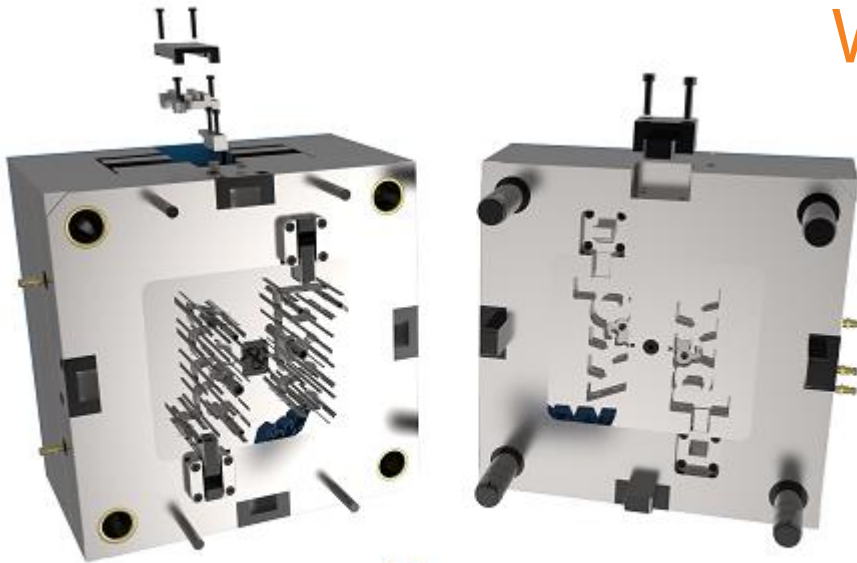
# EMX 11.0.4.0

What's New?



# EMX 11.0.3.0

What's New?



# Components

---

## New HASCO screws:

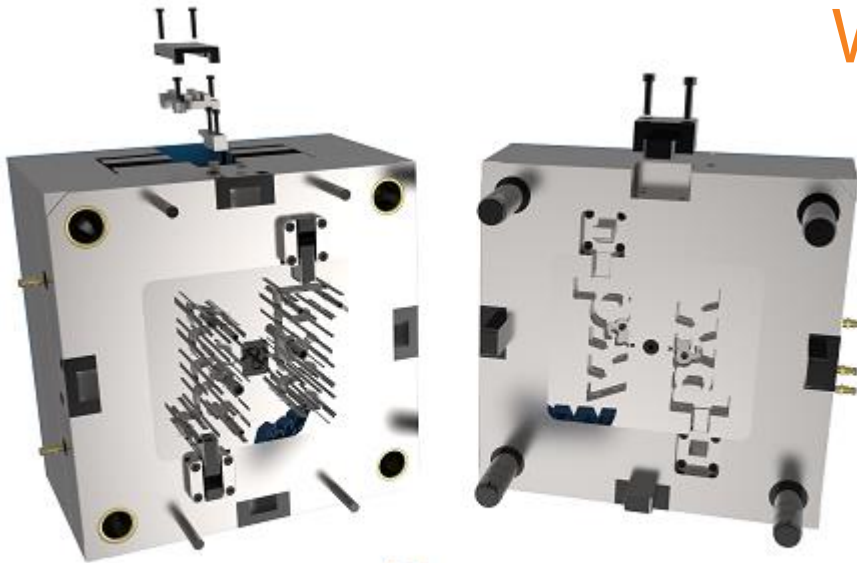
- Z34, Z351, Z371, Z372, Z3721, Z721

## New HASCO sprue bushings:

- Z510, Z530

# EMX 11.0.2.3

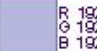

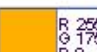
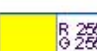

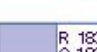
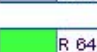
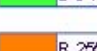
What's New?

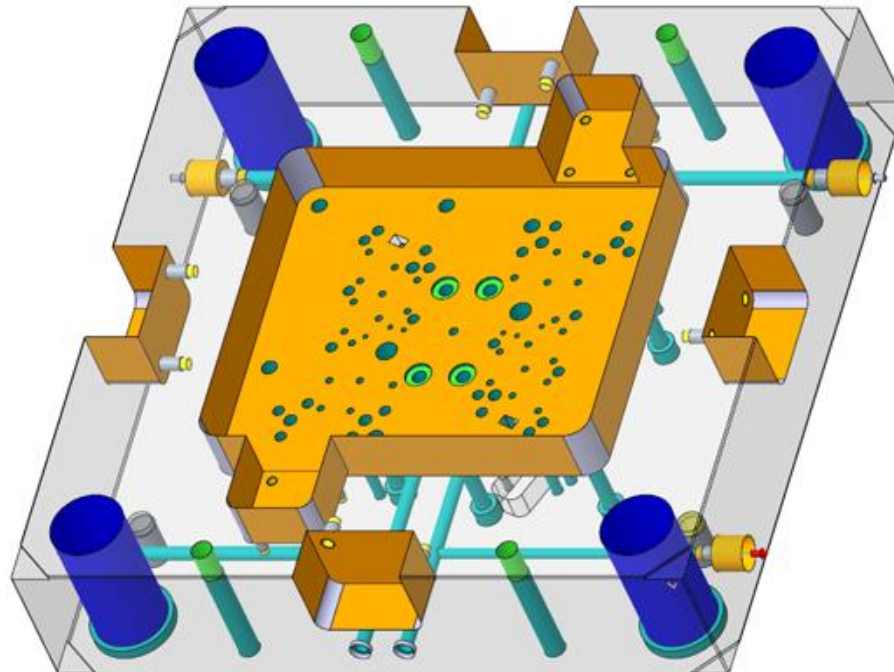


# Enhancements

## EMX is now SMARTColor ready!

- Apply color coding rules with B&W SMARTColor application
- More information on our website: [SMARTColor in EMX](#)

	R 192 G 192 B 192	$\sqrt{Ra\ 0.8-6.3}$
	R 0 G 175 B 175	$\pm 0,10$ $\sqrt{Ra\ 6.3}$
	R 255 G 175 B 0	$\pm 0,10$
	R 255 G 255 B 0	$\pm 0,10$
	R 0 G 0 B 255	H7 $\pm 0,01$ $\sqrt{Ra\ 1.6-3.2}$
	R 183 G 183 B 220	$\pm 0,10$ $\sqrt{Ra\ 6.3}$
	R 64 G 255 B 64	$\pm 0,05$ $\sqrt{Ra\ 3.2}$
	R 255 G 128 B 0	$\pm 0,01$ $\sqrt{Ra\ 1.6-3.2}$



# Enhancements

## New STRACK Z4 latch lock assembly

- New assembly contains all variation of the Z4 latch lock

**STRACK®**  
NORMALIEN

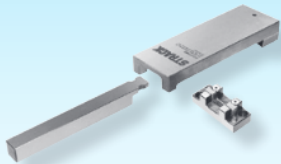
Entformungselemente – indirekt | Demoulding elements – indirect  
Éléments de démoulage – indirects

Klinkenzüge

Latch locks

Ouvres-moules

DLC 

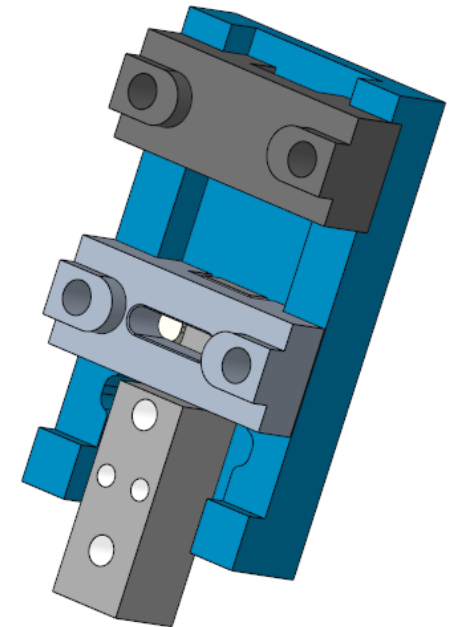
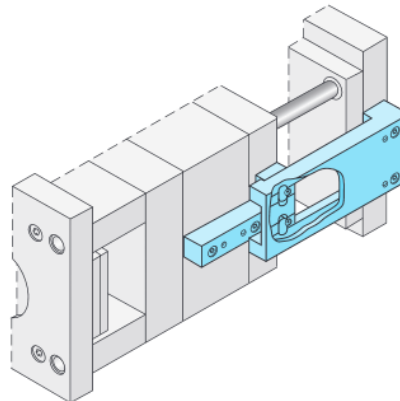


Z4-1-

**i** deutsch 6.84-94  
english 6.95-105  
français 6.106-116



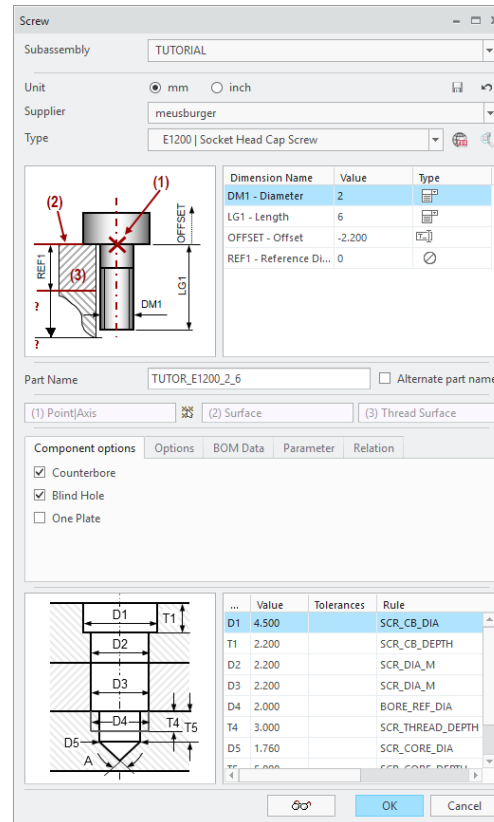
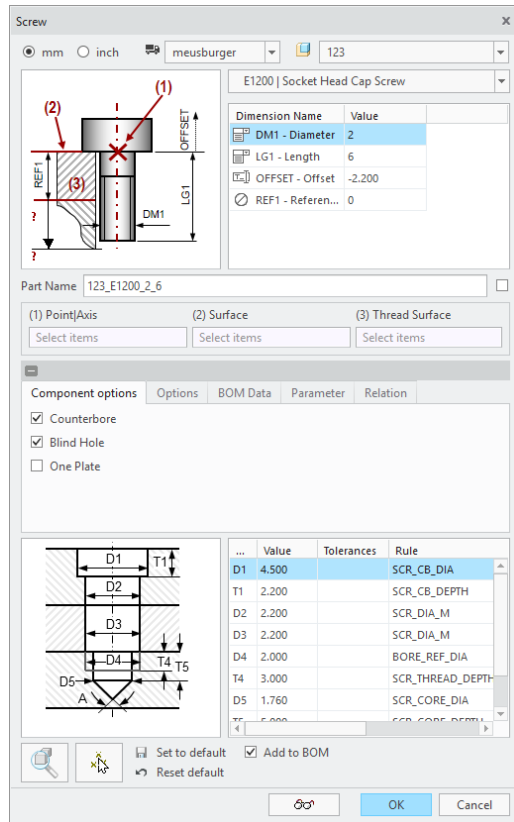
Z4-1-Type





# Enhancements

## Streamlined UI of Component Dialog:

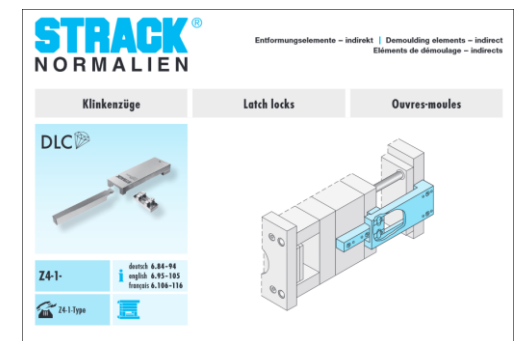
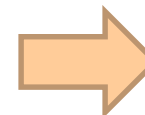
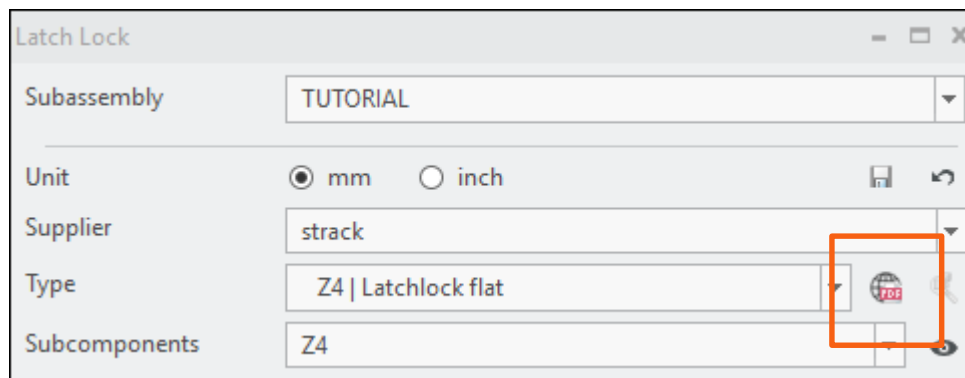
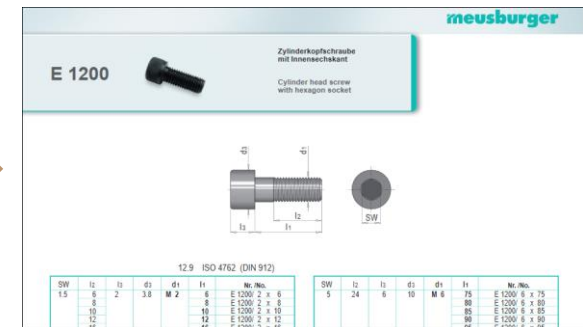
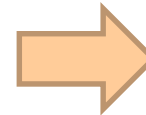
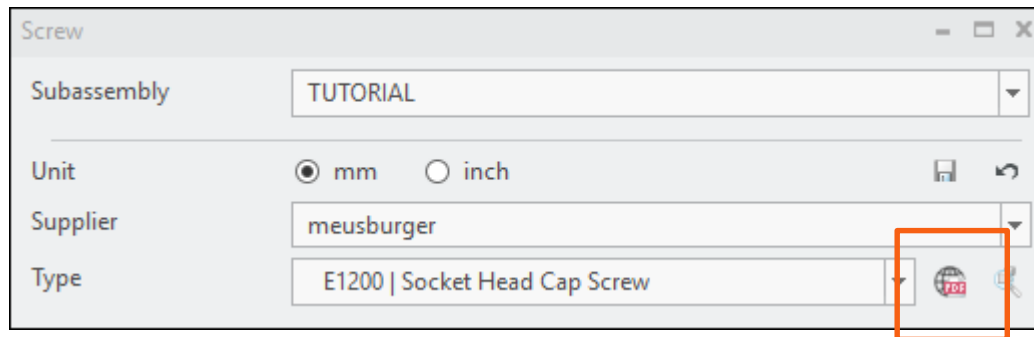


- Type selection improved
- Buttons moved from bottom area to related UI elements
- Dialog is resizable and can be maximized
- Missing UI descriptions added

# Enhancements

## New weblink button in Component Dialog:

- Access data sheets on supplier website with one click!



# Plates

---

## HASCO plates updated:

- All plates and instance updated to latest revision

## New KNARR plates added:

- KNARR – F (Meusburger compatible) and K (Hasco compatible) plates are now available

# Components

## New KNARR guide components:

- 551000, 551000DLC, 551010, 551010DLC and 551100

## New KNARR ejector pins:

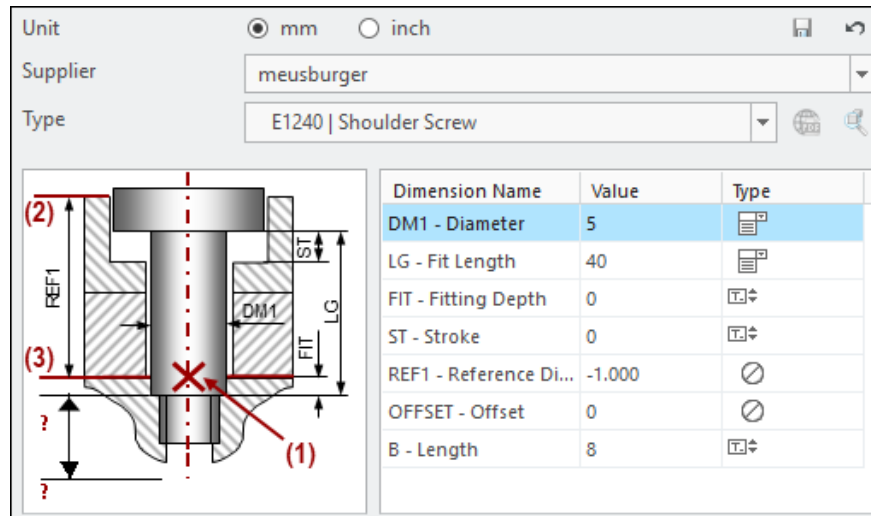
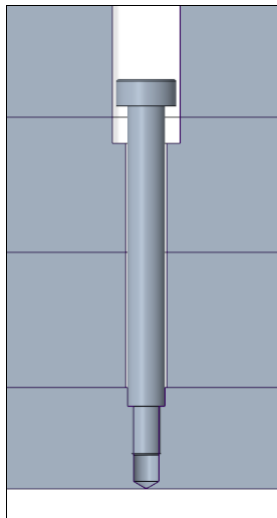
- 539111, 39111DLC and 39414

## New KNARR insulation plates:

- 77335 and 77336

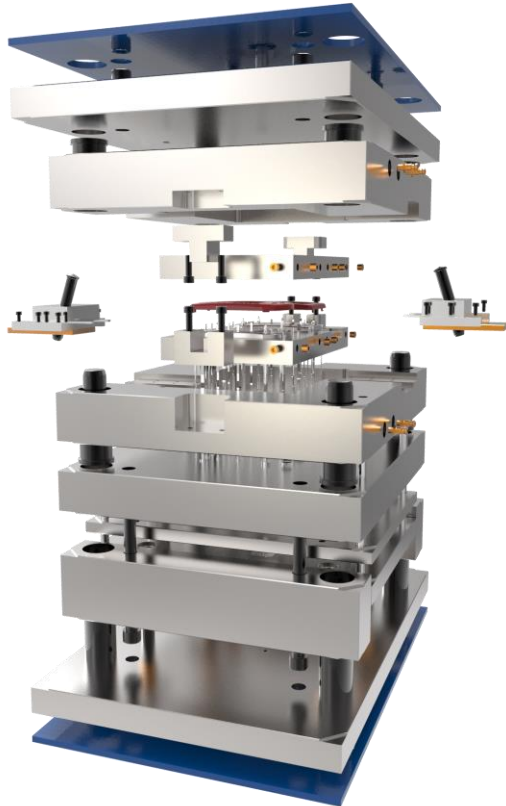
## Improved shoulder screw functionality:

- Meusburger E1240, Hasco Z38, Knarr 40038, DME WZ412 and DIN 7379



# EMX 11.0.2.2

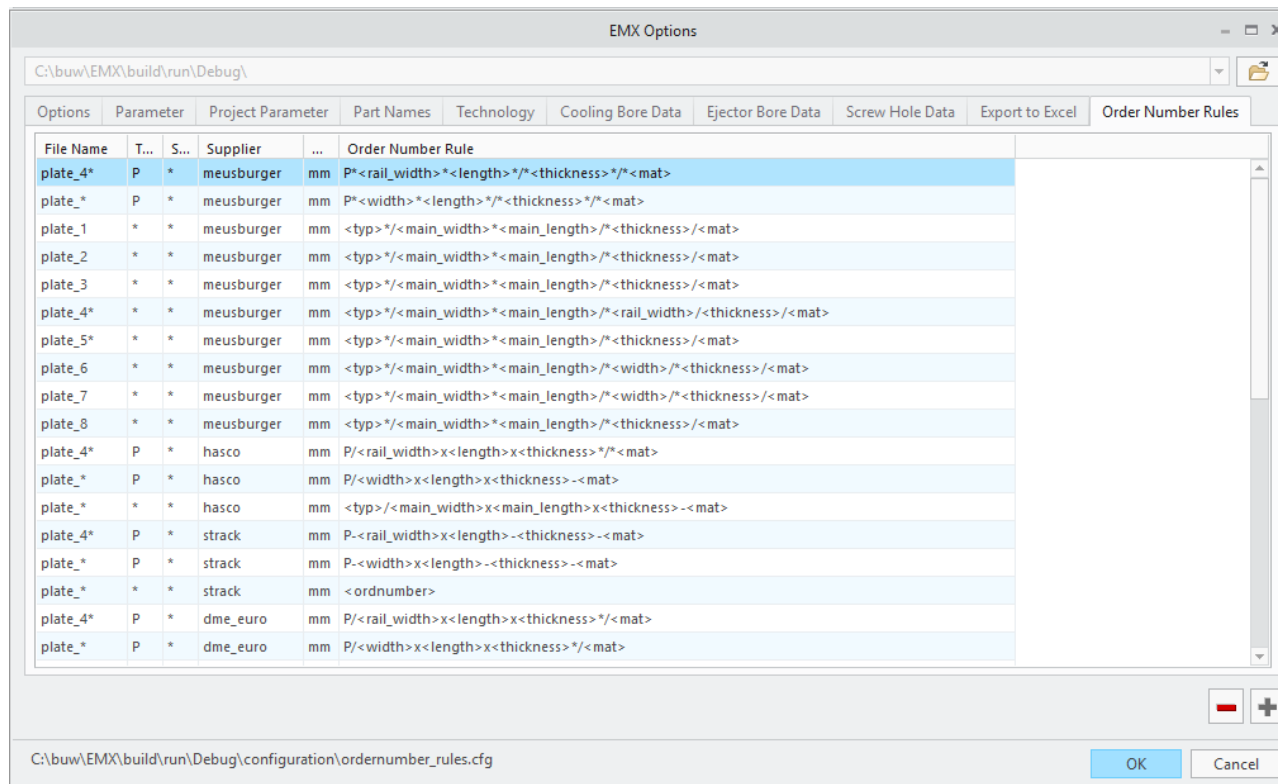
What's New?



# Enhancements

## New configuration section: Define custom order number rules

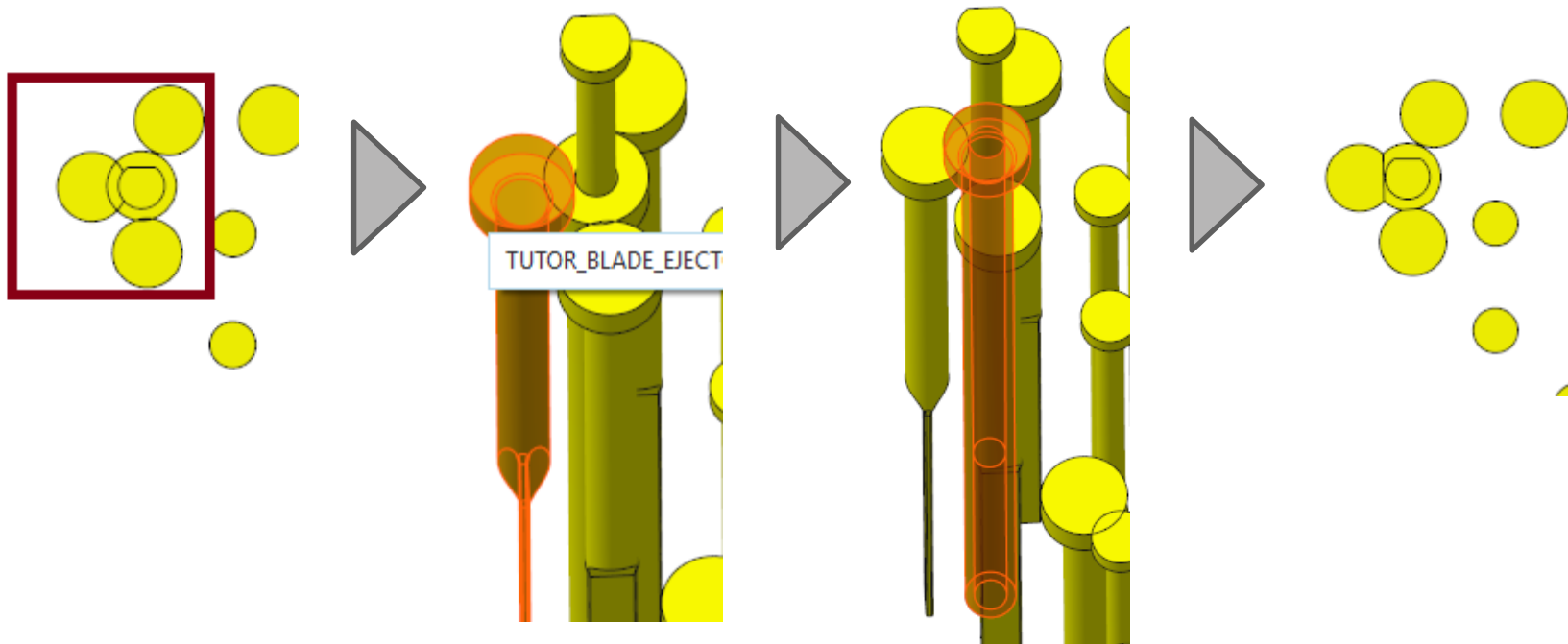
- Rules can now be different for different suppliers, type, units and file names



# Enhancements

## New Feature: Trim Ejector Pin heads against each other

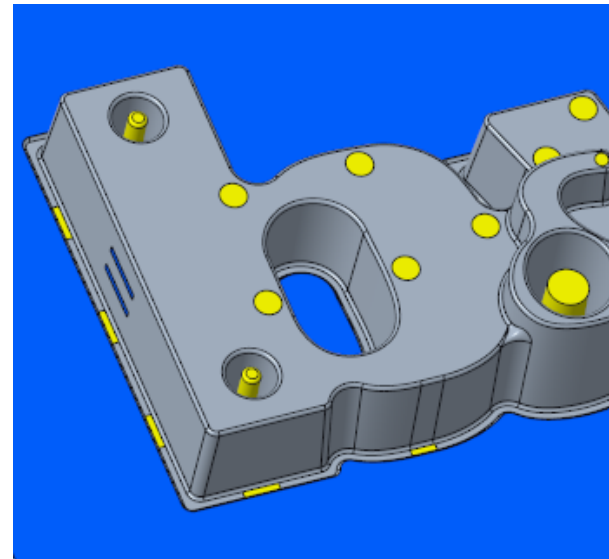
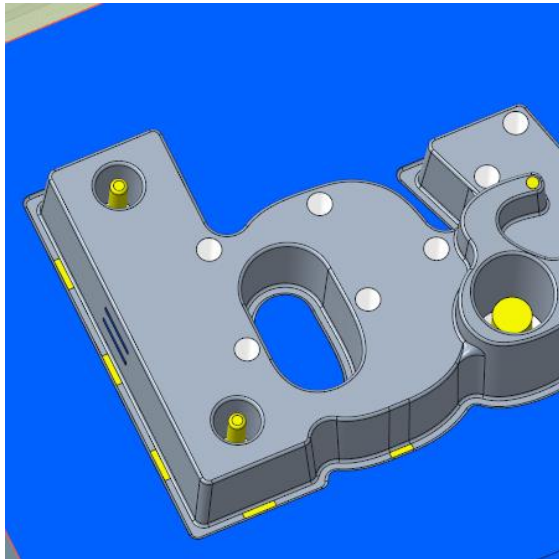
- Interfering ejector pin heads can be trimmed by selecting to different ejector pins



# Enhancements

## New Feature: Update Existing Ejector Pins Dialog

- New command in Ribbon
- Update ejector pins length and order number in case required reference distance has changed.

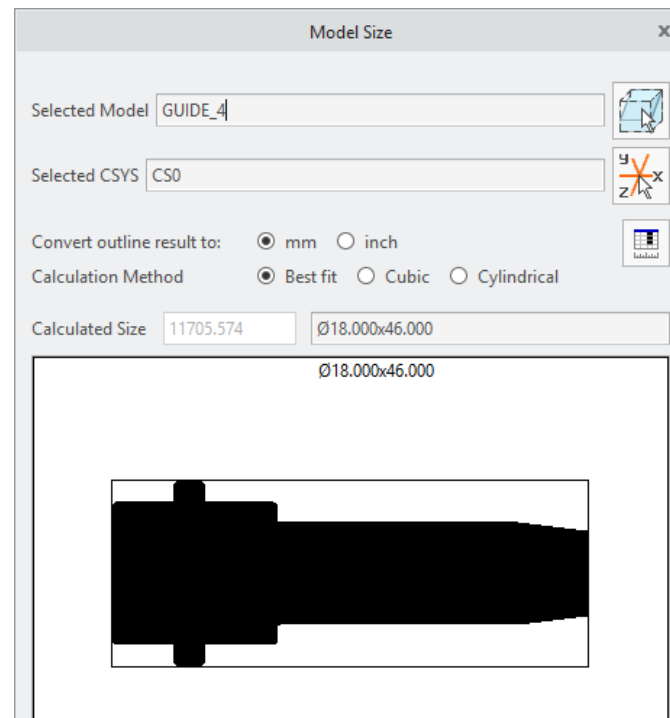
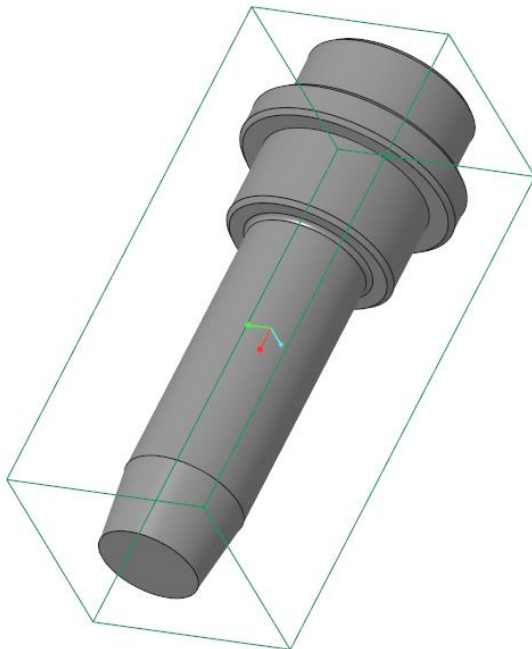




# Enhancements

## Improvement for Model Size Dialog

- Display outline values in drawing area
- Allow user to toggle between cubical and cylindrical result in case cylindrical result was determined.
- Improve algorithm to detect cylindrical parts



# Enhancements

---

## Improved performance of parameter read and write function

Reduce time working with EMX!

- Assembling of Components

 i.e. 240 Ejector Pins: ~45 % faster

- Bill of Materials

 i.e. Open Bill Of Materials Dialog: ~ 40 % faster  
i.e. Close Bill Of Materials Dialog: ~ 55 % faster

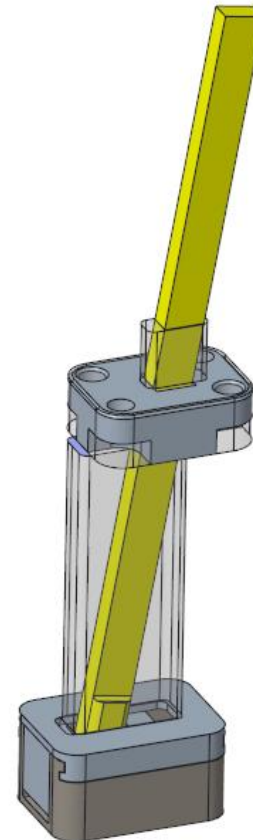
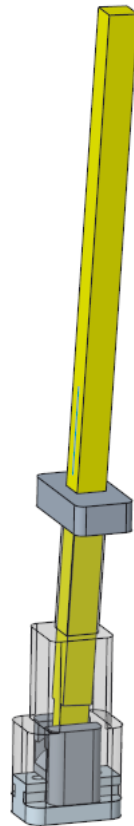
# Enhancements

## New MEUSBURGER Lifter assemblies added

- Additional improvement: Trimmed body can be displayed in Preview



- E3244 + E3240
- E3246 + E3240

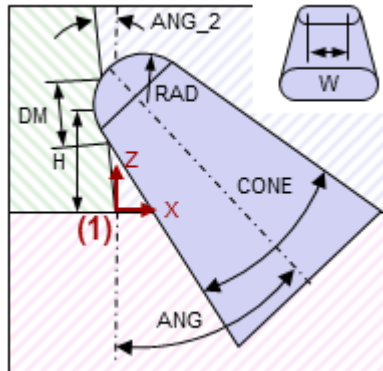


- E32481 +  
E3248 +  
E3249

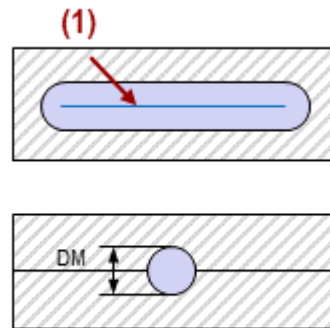
# Enhancements

## New Runner Library Components

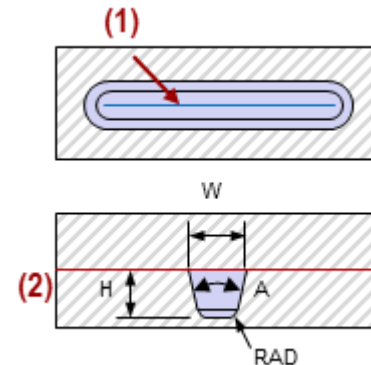
- With the new library components and UDFs runners can be designed easily.



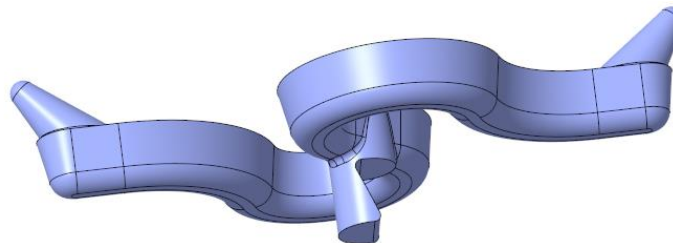
- Conic Gate



- Round runner section UDF



- Trapezoid runner section UDF




# New Components

---

## MEUSBURGER

- New Cooling Components: O-Ring E21311
- New Ejector Pins: E17003 and E1723
- New Side Interlocks: W44, Z38,Z46

## HASCO

- New slide plates Z555, Z556 and Z557
  - New and updated Ejector Pins Z412, Z4650, Z4651, Z4670, Z4671, Z413, Z443, Z457, Z461, Z465, Z44, Z441, Z45 and Z45
  - New Guides Z14 and Z1105
  - New Cooling Components Z9430 and Z9400
- 
- A decorative graphic element in the bottom right corner consisting of a thick grey curved line and a thinner orange curved line.

# Updated Components

---

## MEUSBURGER

- Update E-Components to latest state: 1st quarter 2019

## HASCO

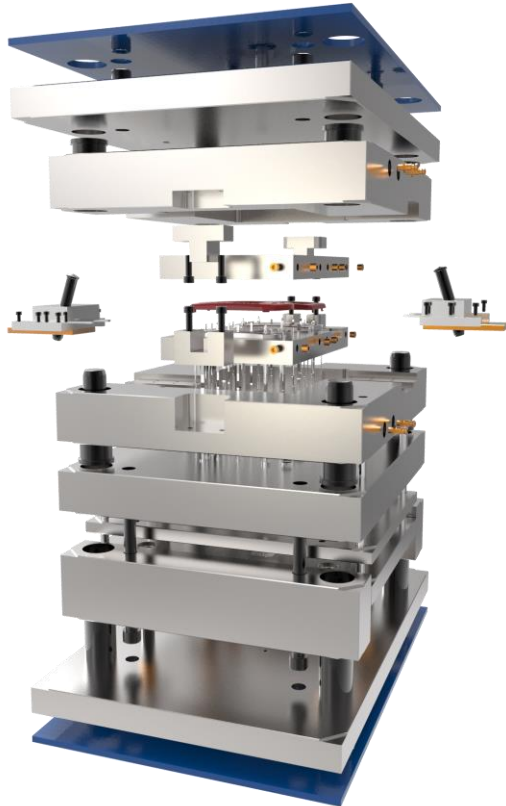
- Remove deprecated Z30 screw
- Screws: Z30 and Z33
- Knockouts: Z02
- Locating Rings: K100, K107, K500, K501, K505, K506, K1000, Z7510, Z7515, Z7520, Z7525, Z7530, Z7535 and Z7540.
- Dowel Pins: Z25 and Z26
- Guides: Z01, Z010, ZU10, Z20, Z040 and Z0100
- Cooling Components: Z94, Z940 and Z9661

## DIN

- More screw lengths are available for DIN screws
- 
- A decorative graphic element in the bottom right corner consisting of a thick grey curved line and a thinner orange curved line.

# EMX 11.0.2.1

What's New?



# Enhancements

## New Feature: Direct Interface for Export to Excel available

- No more Visual Basic macro in Excel required.
- Settings can be configured in EMX Options.
- Export to any selected Excel BOM template possible.

EMX Options

C:\buw\EMX\build\run\Debug\

Options | Parameter | Project Parameter | Part Names | Technology | Cooling Bore Data | Ejector Bore Data | Screw Hole Data | **Export to Excel**

Start with row number:

New page at row number: ☐

Sheet Name:

Parameter	Column
POS	A
QTY	B
BOM_NAME	C
ORD_NUMBER	D
MATERIAL	E
SUPPLIER	F
NOTE	G

Project Parameter	Cell
CUSTOMER	B2
ARTICLE	E2

PARTNAME

C:\buw\EMX\build\run\Debug\configuration\excel\_export\_configuration.cfg

OK Cancel



# Enhancements

## New Feature: Direct Interface for Export to Excel available

Both Options still available:



1. Direct Interface

2. Export by VBA-Macro

Bill of Materials						
Position	Quantity	Description	Order Number	Material	Supplier	Note
1	1	Clampingplate MovingHalf	F20/346x346x36-1730	1.1730	Meusburger	
2	1	EjectorRetainerPlate MovingHalf	F85/346x346/256/22-1730	1.1730	Meusburger	
3	1	EjectorBasePlate MovingHalf	F80/346x346/256/17-1730	1.1730	Meusburger	
4	1	Risers MovingHalf Left	F70/346x346/44x86-1730	1.1730	Meusburger	
5	1	Risers MovingHalf Right	F70/346x346/44x86-1730	1.1730	Meusburger	
6	1	Intermediateplate MovingHalf	F60/346x346x36-1730	1.1730	Meusburger	
7	1	Cavityplate MovingHalf	F50/346x346x56-1730	1.1730	Meusburger	
8	1	Cavityplate FixHalf	F50/346x346x76-1730	1.1730	Meusburger	
9	1	Clampingplate FixHalf	F20/346x346x36-1730	1.1730	Meusburger	
10	4	Set screw	E1220/5x16	10.9	Meusburger	
11	4	Stopdisc+Screw	E1500/20	1.1730	Meusburger	
12	4	Stop Disc	E1500/20	1.1730	Meusburger	
13	4	SHC Screw	E1200/12x160	12.9	Meusburger	
14	4	SHC Screw	E1200/12x40	12.9	Meusburger	
15	4	SHC Screw	E1200/8x25	12.9	Meusburger	
16	1	Guidebush	E1100/22-76	1.7131	Meusburger	
17	3	Guidebush	E1100/24-76	1.7131	Meusburger	
18	1	Leaderpin	E1010/22-56/75	1.7131	Meusburger	
19	3	Leaderpin	E1010/24-56/75	1.7131	Meusburger	

## What's Possible:

- Parameter to defined column.
- Project Parameter to defined cell.
- Start from defined row number
- Optional: New sheet at defined row number.

# Enhancements

## New STRACK Sliders:

New Types:

Z4290, Z4290L, Z4292, Z4293, Z4294, Z4294L, Z4295, Z4296, Z4296L and Z4298



Z4290L



Z4294L



Z4296L

# Enhancements

---

## New Components:

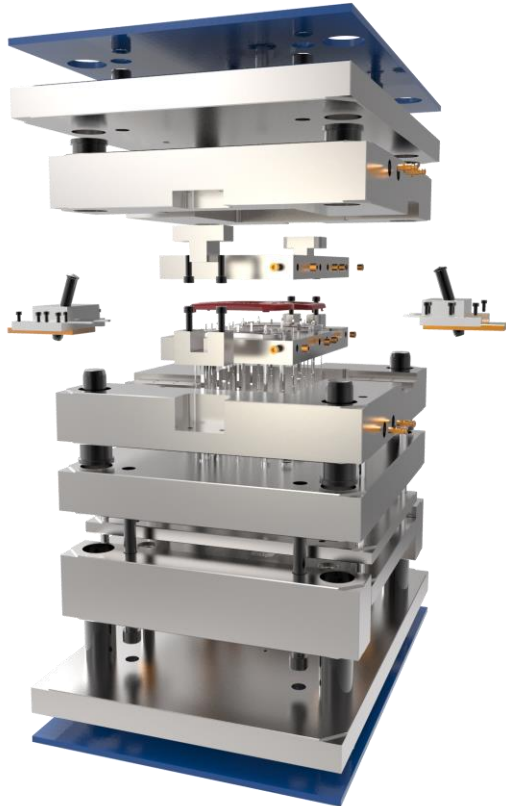
- STRACK – Ejector Pins: R1628 and R1634
- HASCO – Torx Screw: Z330
- MEUSBURGER - Cooling Component: E2112
- MEUSBURGER - Guide Component: E5000 and E5200
- MEUSBURGER - Ejector Pins: E1711 and E17264DLC
- DIN – Ejector Pins: DIN1530-D, DIN6751, DIN8405, DIN8693 and DIN8694.

## Updated Components:

- MEUSBURGER – Plates and Component
  - HASCO – Insulation Plates
- 
- A decorative graphic in the bottom right corner consisting of a thick grey curved line and a thinner orange curved line following its path.

# EMX 11.0.2.0

What's New?



# Enhancements

---

## New Option: USE\_LAYERS\_FOR\_SIDE\_VIEWS

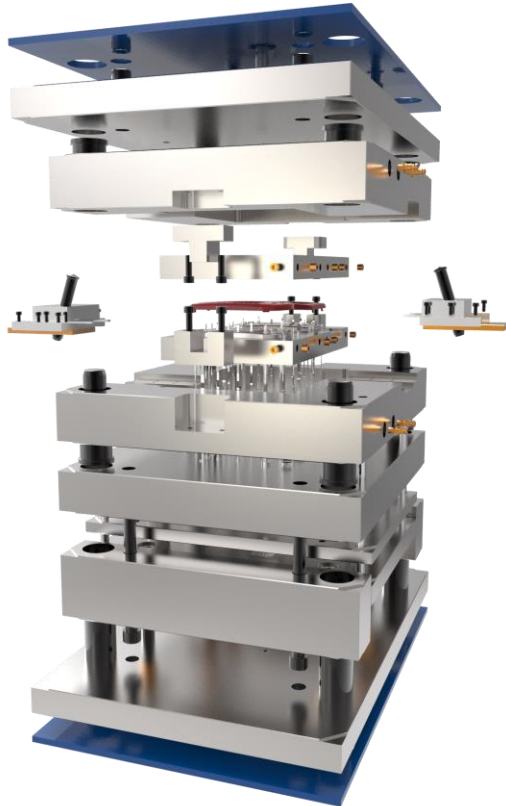
- Instead of simplified representations all EMX components can be put on layers to display the moving and fixed half in the View functionalities.

## Major Bug Fixes

- Creo Toolkit API function ProMathExpressionEvaluate behaves different beginning with Creo 4 M080. An Update to EMX 10.0 M030 is required.

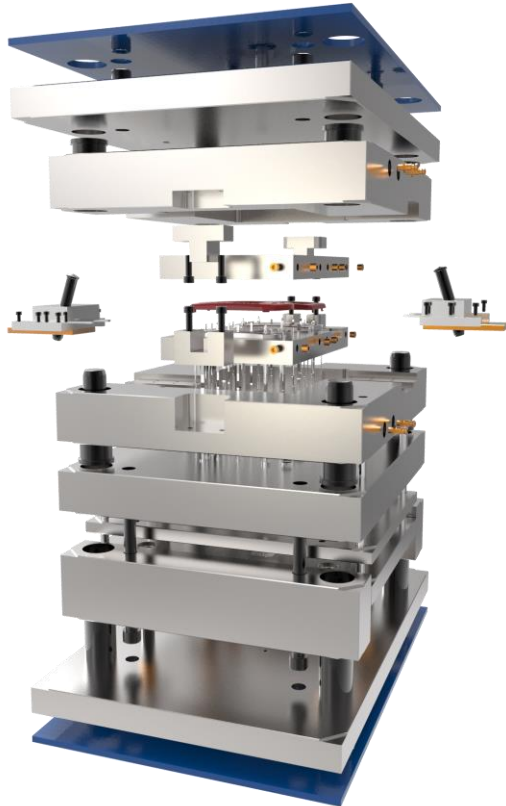
# EMX 11.0.1.2

What's New?



# EMX 11.0.1.1

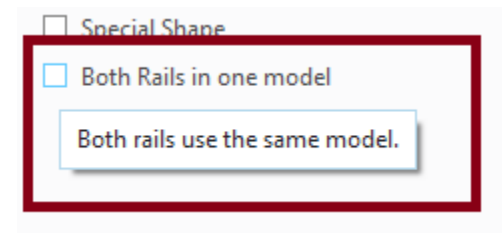
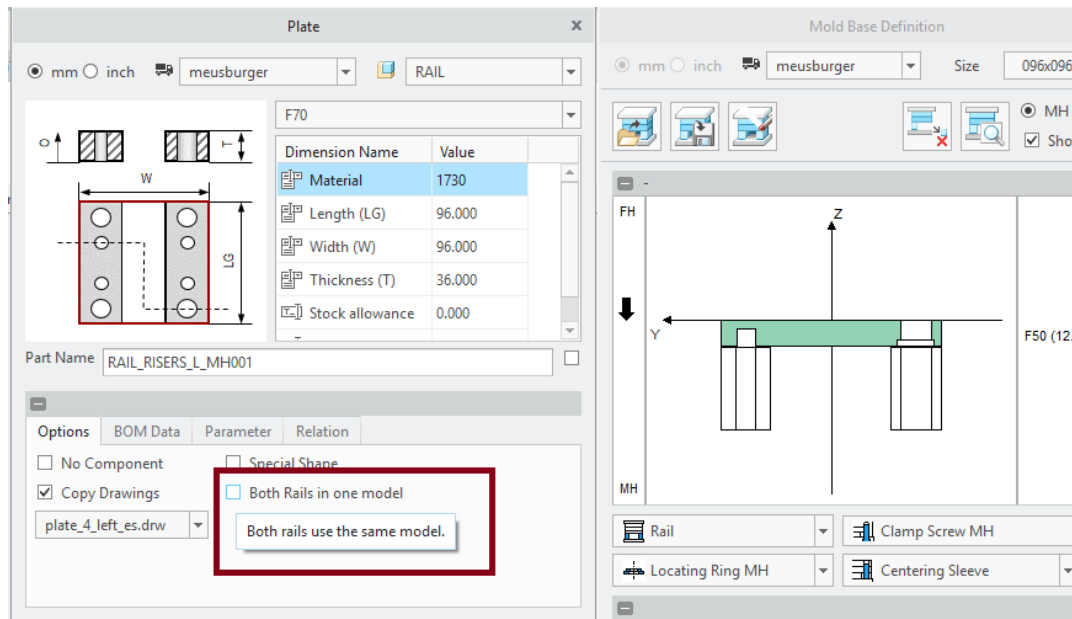
What's New?



# Enhancements

## “Use One Model Rail” can be modified from Rail Plate Dialog

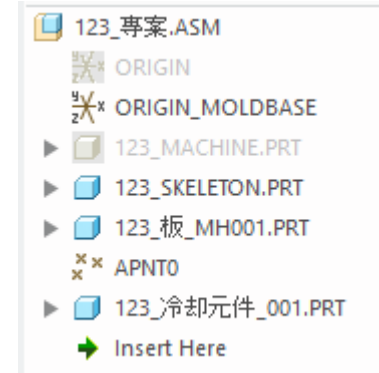
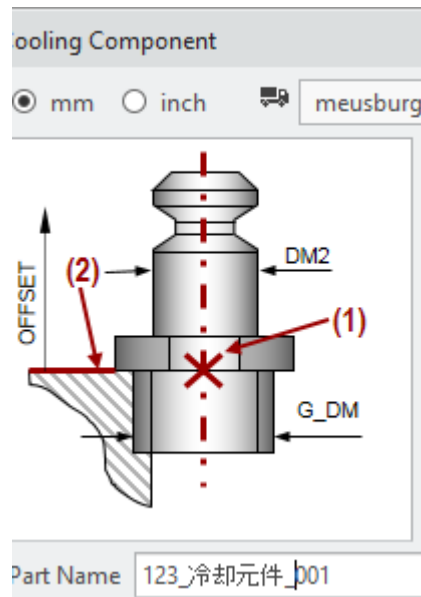
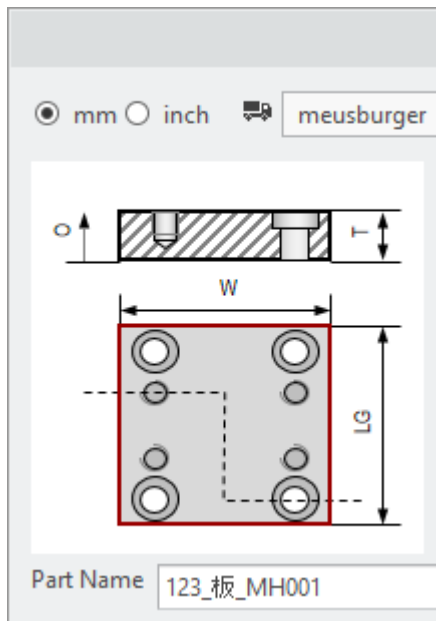
- The EMX Option USE\_ONE\_MODEL\_RAIL only sets the default for check button
- Different types of rail models can be assembled to one mold base





# Enhancements

Unicode characters are supported for file names, parameter names and parameter values.



# Enhancements

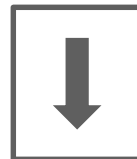
In BOM Dialog use UP and DOWN arrow keys to jump to next cell at top or bottom.

- Reduces clicks when working in the BOM
- Current cell value is confirmed and next cell is activated

PARTID	BOM_NAME	S
01-0001	Aufspannplatte Auswerferseite	M
01-0001	Auswerfergplatte Auswerferse...	M
01-0001	Auswerferplatte Auswerferseite	M
01-0001	Leiste Auswerferseite	M
01-0001	Leiste Auswerferseite	M
01-0001	Zwischenplatte Auswerferseite	M
01-0001	Rahmenplatte Auswerferseite	M
01-0001	Rahmenplatte Duesenseite	M
01-0001	Leiste Duesenseite	M
01-0001	Leiste Duesenseite	M
01-0002	Aufspannplatte Duesenseite	M
01-0001	Auswerfergplatte Duesenseite	M
01-0001	Auswerferplatte Duesenseite	M



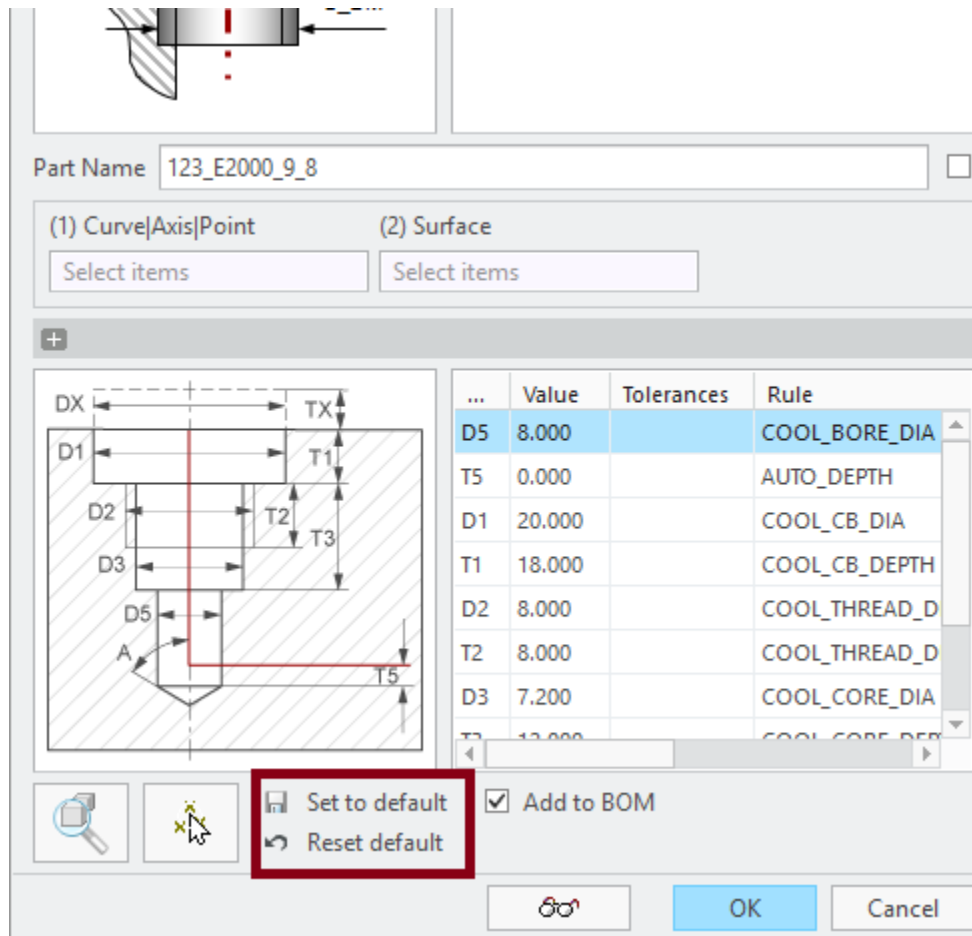
01-0001	Auswerferplatte Auswerferseite	I
01-0001	Leiste Auswerferseite	I
01-0001	Leiste Auswerferseitep	I
01-0001	Zwischenplatte Auswerferseite	I
01-0001	Rahmenplatte Auswerferseite	I



01-0001	Auswerferplatte Auswerferseite	I
01-0001	Leiste Auswerferseite	I
01-0001	Leiste Auswerferseite	I
01-0001	Zwischenplatte Auswerferseite	I
01-0001	Rahmenplatte Auswerferseite	I
01-0001	Rahmenplatte Auswerferseite	I

# Enhancements

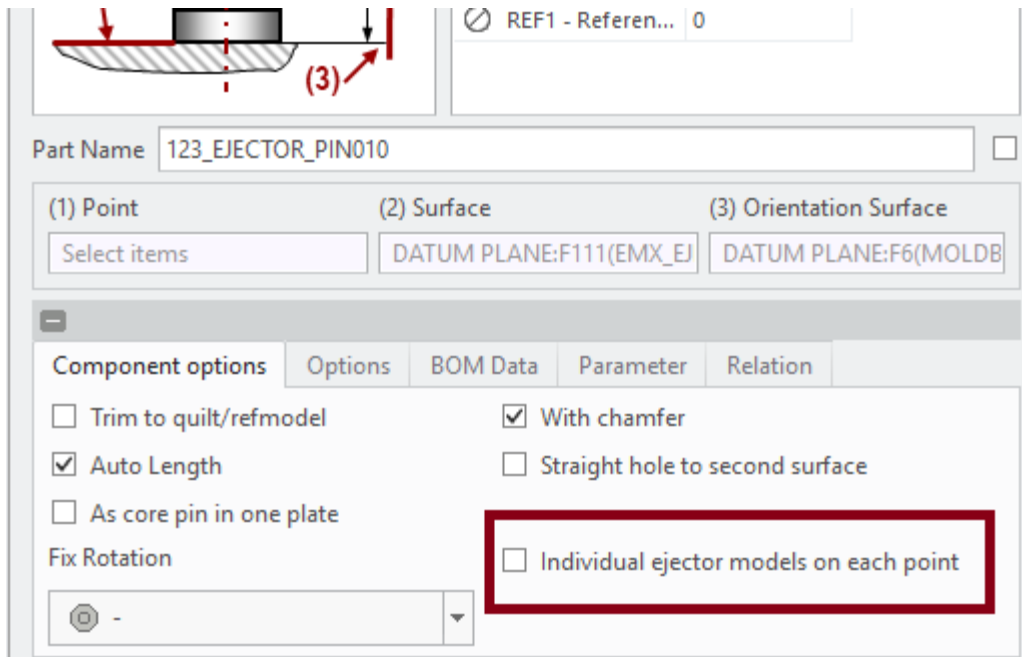
New button in Component Dialog to reset saved component instances to default.



# Enhancements

Ejector pins defined on multi point features can be forced to be created as individual models.

- Previously option ENABLE\_MULTI\_EJP behavior in EMX Options
- The EMX Option ENABLE\_MULTI\_EJP only the sets default for check button



REF1 - Referen... 0

Part Name 123\_EJECTOR\_PIN010

(1) Point (2) Surface (3) Orientation Surface

Select items DATUM PLANE:F111(EMX\_EJ DATUM PLANE:F6(MOLDB

Component options Options BOM Data Parameter Relation

☐ Trim to quilt/refmodel ☒ With chamfer

☒ Auto Length ☐ Straight hole to second surface

☐ As core pin in one plate

Fix Rotation

☐ Individual ejector models on each point

# Components

---

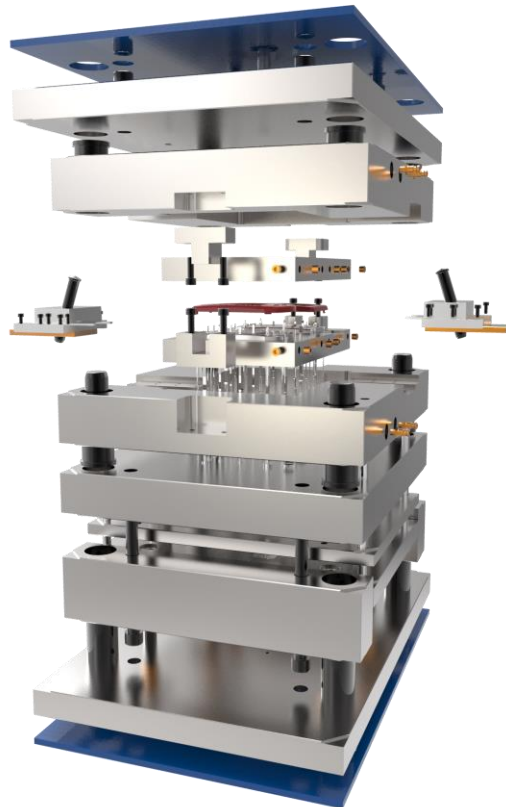
## New components

- MEUSBURGER cooling components E20749 and E2074D.

# EMX 11.0.1.0

## What's New?

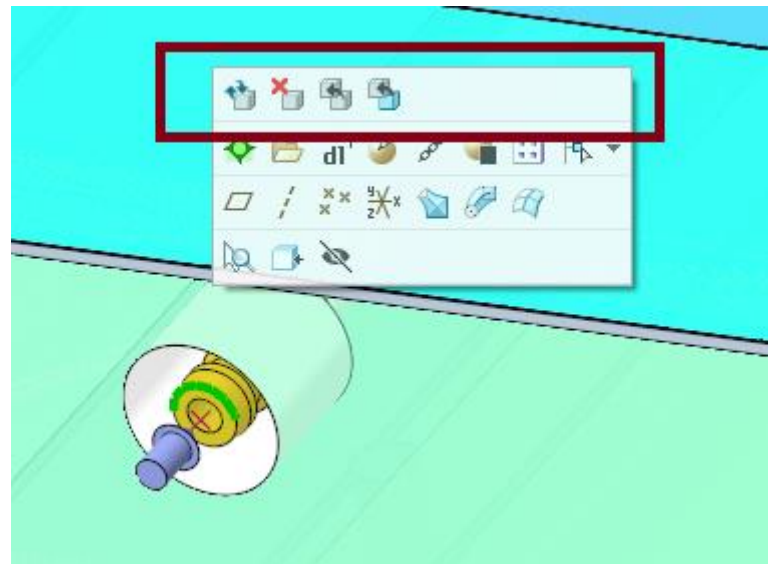
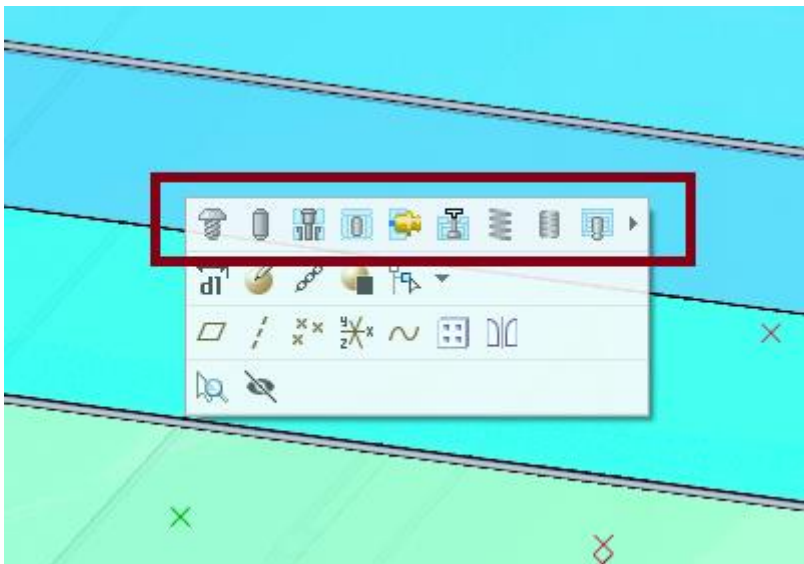
- Enhancements
- Components



# Enhancements

## Enable Mini Tool Bar with EMX 10 and Creo 4.0

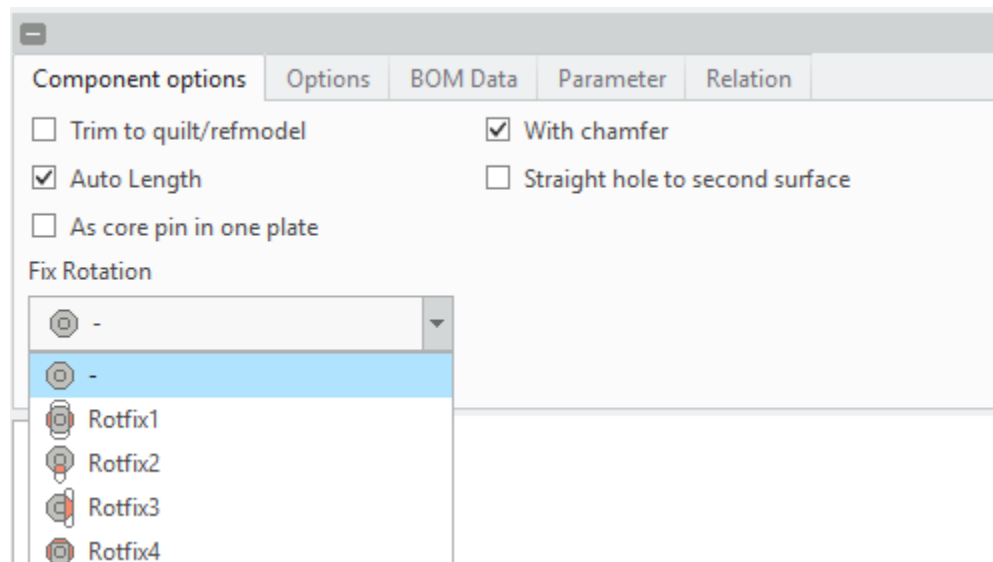
- Select Datum Points and Axis
- Create Components by Mini Tool bar commands
- Selection of selected datums is immediately stored in Component Dialog



# Enhancements

## Improve Ejector UDFs and Options

- New Rotation Fixture Type
- New Chamfer Option
- Visualization of Trim Option
- Separate Rotation Fixture Angle for all UDF Types
- Improved Preview Sketch UDFs
- Separate Tabs for Component Options and Assembly Options

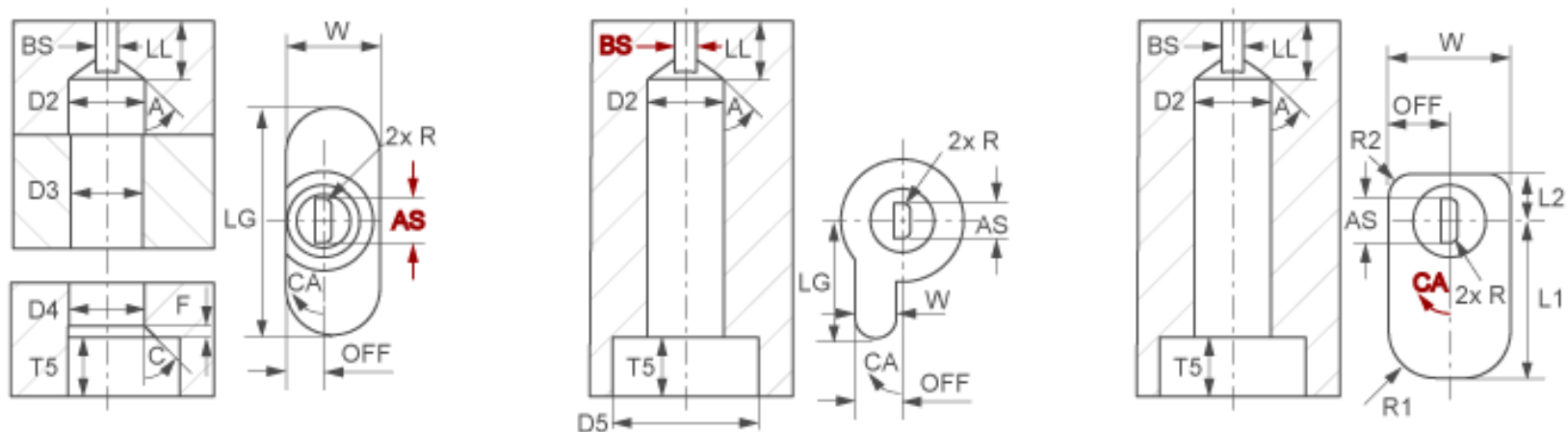




# Enhancements

## New UDF Images for Cooling Components, Guides, Ejector Pins and Dowel Pins

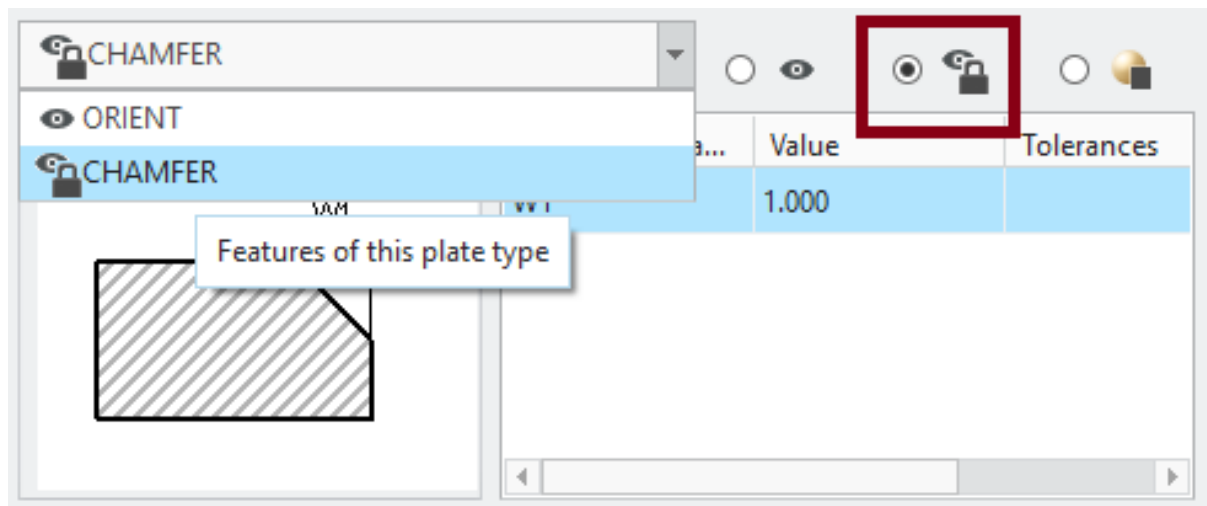
- Verification of all visualized UDF dimensions
- New Design



# Enhancements

## New Feature Visibility Status Type “Visible Locked” in Plate Dialog

- Feature can be resumed and locked.
- It will not be suppressed when changing the size of the plate



# Components

---

## STRACK

- Update of existing ejectors
- New Springs: SN2520, SN2540, SN3560, SN3580, SN2590, SN2600, SN2625
- New Side Interlocks: W44, Z38,Z46

## EBERHARD

- Update of existing ejectors
- New Ejectors: 6116, 6118, 612R, 6143, 6178, 6261, 6271, 6281, 6331, 6335, 6341, 6351, 6361, 6371, 6381, 6441, 6622

## MEUSBURGER

- Update component and plate data to latest state

## LKM

- Clamping Slots available for side gate plates

## KNARR

- Update component data to latest state
- 
- A decorative graphic element in the bottom right corner consisting of a thick grey curved line and a thinner orange curved line.