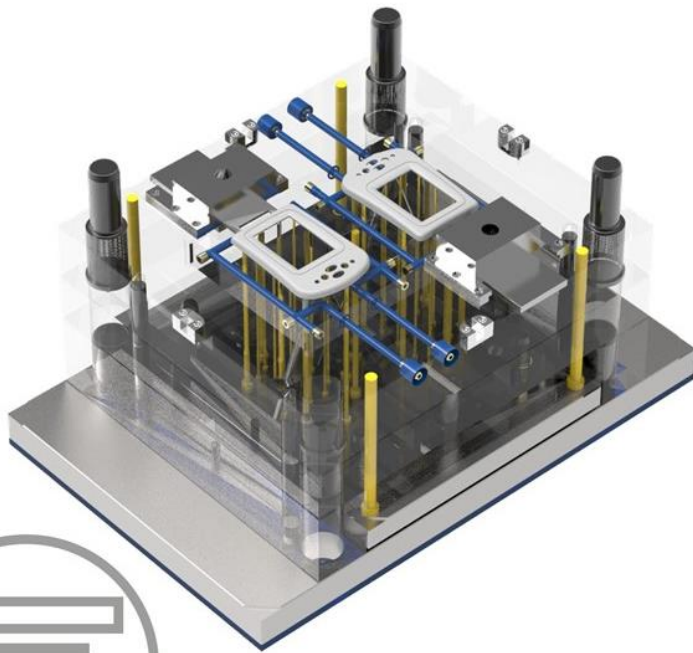


# EMX 9 M024



## What's New?

- Enhancements
- Components



# Enhancements

## Enhancement 1

All BOM Position IDs can be frozen:  
Freeze the Pos IDs in late state of design to ensure no more changes are made.

E...	V...	MODELL	POS	QTY	Σ PARTNAME	PARTID	BOM_NAME	CUSTOMER
		12345_CLP_PLATE_MH001	1	1	12345_CLP_PLATE_MH001	01-0001	Clampingplate Movinghalf	?
		12345_EIBASE_PLATE_MH001	2	1	12345_EIBASE_PLATE_MH001	01-0001	EjectorRetainerPlate Movinghalf	?
		12345_EJRET_PLATE_MH001	3	1	12345_EJRET_PLATE_MH001	01-0001	EjectorBesePlate Movinghalf	?
		12345_RISERS_R_MH001	4	1	12345_RISERS_R_MH001	01-0001	Risers Movinghalf	?
		12345_RISERS_L_MH001	5	1	12345_RISERS_L_MH001	01-0001	Risers Movinghalf	?
		12345_NT_PLATE_MH001	6	1	12345_NT_PLATE_MH001	01-0001	Intermediateplate Movinghalf	?
		12345_CAV_PLATE_MH001	7	1	12345_CAV_PLATE_MH001	01-0001	Cavtyplate Movinghalf	?
		12345_CAV_PLATE_FH001	8	1	12345_CAV_PLATE_FH001	01-0001	Cavtyplate Fixhalf	?
		12345_CLP_PLATE_FH001	9	1	12345_CLP_PLATE_FH001	01-0001	Clampingplate Fixhalf	?
		12345_E1220_S_16	10	4	12345_E1220_S_16	02-0008	Set screw	?
		12345_STOP_ASM8	11	4	12345_STOP_ASM8	02-0008	Stopdisc+Screw	?
		12345_STOP_DISC8	12	4	12345_STOP_DISC8	02-0008	Stop Disc	?
		12345_E1200_12_160	13	4	12345_E1200_12_160	02-0002	SHC Screw	?
		12345_E1010_22_56_75	18*	1	12345_E1010_22_56_75	03-0002	Leaderpin	?
		12345_E1010_24_56_75	15	3	12345_E1010_24_56_75	03-0003	Leaderpin	?
		12345_E1100_22_76	22*	1				?
		12345_E1100_24_76	34*	3				?
		12345_E1200_12_40	35*	4				?
		12345_E1200_8_25	47*	4				?
		Hidden Parts List						
		12345	20	1	12345		12345	?
		12345_MACHINE	21	1	12345_MACHINE		Machine	?

EMX Question

Freeze position Ds. Values can't be edited anymore. Do you want to continue?

Yes No

Freeze position number  Yes  No



E...	V...	MODELL	POS	QTY	Σ PARTNAME	CUSTOMER
		12345_CLP_PLATE_MH001	1*	1	12345_CLP_PLATE_MH001	?
		12345_EIBASE_PLATE_MH001	2*	1	12345_EIBASE_PLATE_MH001	?
		12345_EJRET_PLATE_MH001	3*	1	12345_EJRET_PLATE_MH001	?
		12345_RISERS_R_MH001	4*	1	12345_RISERS_R_MH001	?
		12345_RISERS_L_MH001	5*	1	12345_RISERS_L_MH001	?
		12345_NT_PLATE_MH001	6*	1	12345_NT_PLATE_MH001	?
		12345_CAV_PLATE_MH001	7*	1	12345_CAV_PLATE_MH001	?
		12345_CAV_PLATE_FH001	8*	1	12345_CAV_PLATE_FH001	?
		12345_CLP_PLATE_FH001	9*	1	12345_CLP_PLATE_FH001	?
		12345_E1220_S_16	10*	4	12345_E1220_S_16	?
		12345_STOP_ASM8	11*	4	12345_STOP_ASM8	?
		12345_STOP_DISC8	12*	4	12345_STOP_DISC8	?
		12345_E1200_12_160	13*	4	12345_E1200_12_160	?
		12345_E1010_24_56_75	15*	3	12345_E1010_24_56_75	?
		12345_E1010_22_56_75	18*	1	12345_E1010_22_56_75	?
		12345_E1100_22_76	22*	1	12345_E1100_22_76	?
		12345_E1100_24_76	34*	3	12345_E1100_24_76	?
		12345_E1200_12_40	35*	4	12345_E1200_12_40	?
		12345_E1200_8_25	47*	4	12345_E1200_8_25	?
		Hidden Parts List				
		12345	20	1	12345	?
		12345_MACHINE	21	1	12345_MACHINE	?

Freeze position number  Yes  No

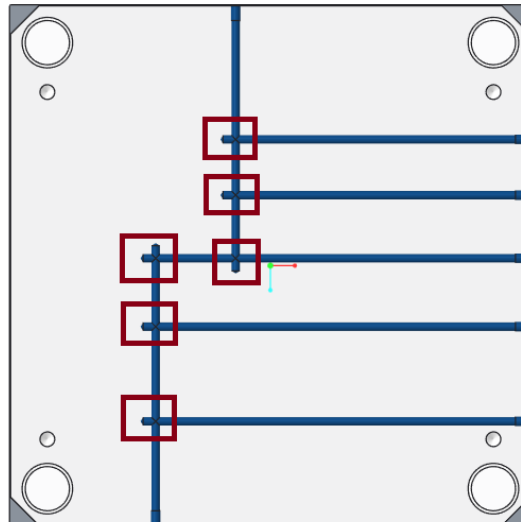
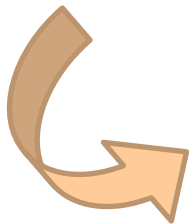
POS ID Parameters are locked and can't be changed with EMX.

# Enhancements

## Enhancement 2

New Option COOL\_ADDITIONAL\_BORE\_DEPTH\_RULE always sets the additional bore depth of a cooling hole to a given value or rule

Options	Parameter	Project Parameter	Part Names	Technology	Cooling Bore Data	Ejector Bore Data	Screw Hole Data	
Option	Value	Description						
COOLING_ADDITIONAL_BORE_DEPTH_RULE	1.5*COOL_BORE_DIA	Rule for calculating the additional hole depth for cooling hole 'Use Curve Length' is selected in pull-down menu.						



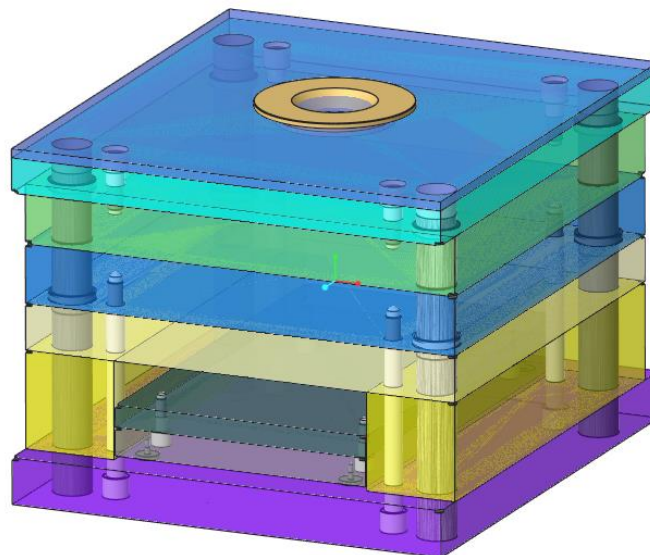
## Enhancements

---

### Enhancement 3

New HASCO K45 transversal mold plates implemented.

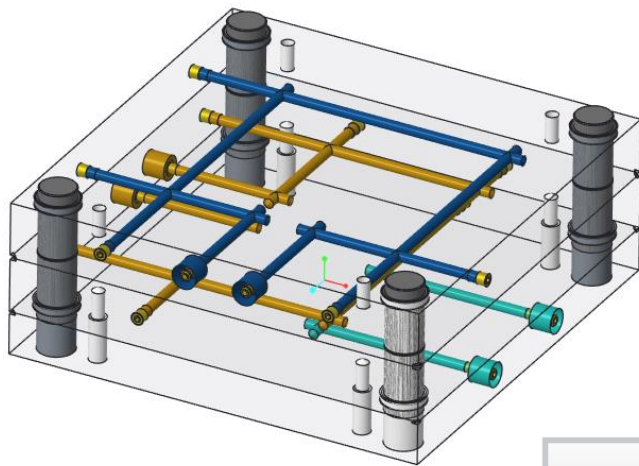
Can be selected from size pull-down in Mold base Dialog:  
Designated with „i“ for inverse, e.g. 346x346i



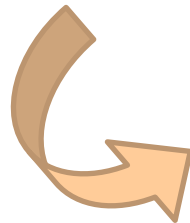
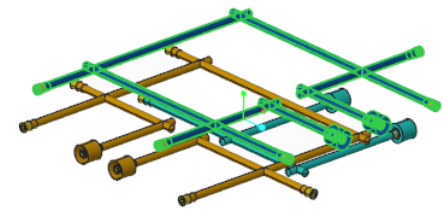
# Enhancements

## Enhancement 5

Cooling circuits can be extracted for each plate individually



	Feat ID
K45_WATERLINE_0.ASM	
ASM_RIGHT	1
ASM_TOP	3
ASM_FRONT	5
ASM_DEF_CSYS	7
K45_INT_PLATE_MH00	41
K45_CAV_PLATE_MHC	42
K45_CAV_PLATE_FH0	43
K45_E2000_9_8.PRT	53
K45_E2074_8_10.PRT	56
K45_E2074_8_10.PRT	59
K45_E2074_8_10.PRT	62



Show Waterline X

Waterline Model Name

Options

Include Components

Include Reference Model

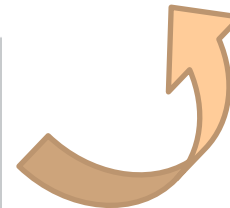
Include Creo Parametric Waterline Features

Create solids

Create circuit per Part

▶

Close

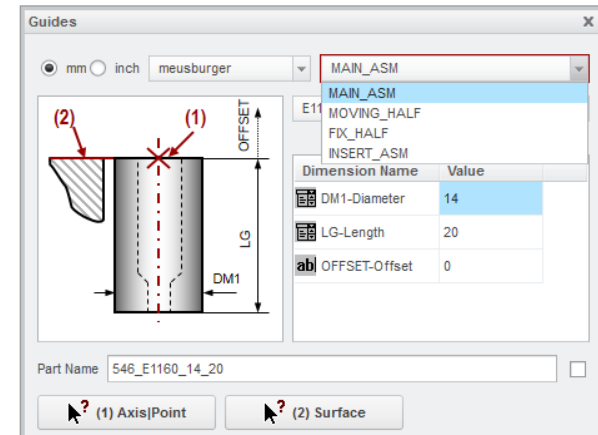
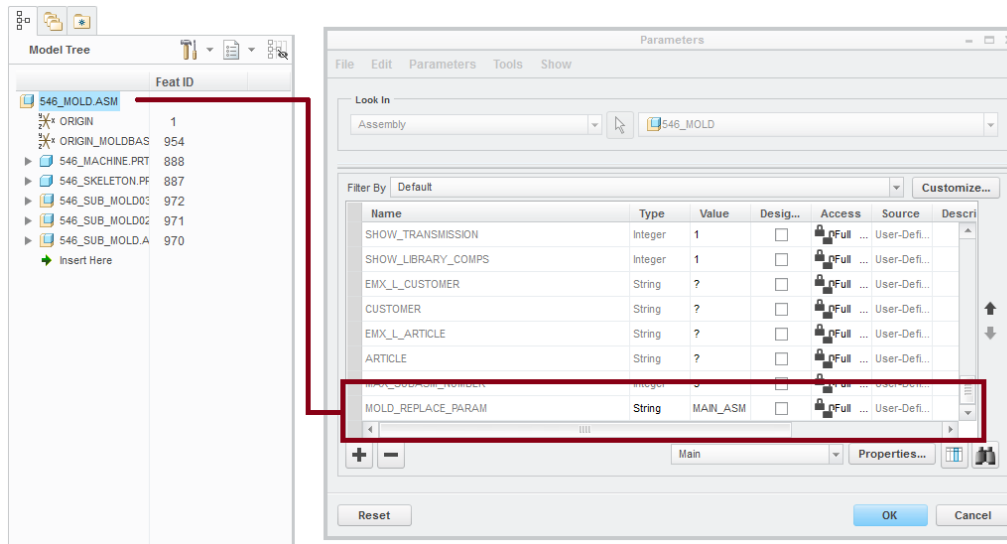


# Enhancements

## Enhancement 4

New option `ASM_LABEL_PARAM`: Display parameter value in subassembly pull-down instead of sub assembly name.

Option	Value	Description
<code>ASM_LABEL_PARAM</code>	<code>MOLD_REPLACE_PARAM</code>	Parameter, thats content is displayed as assembly name in the pulldown

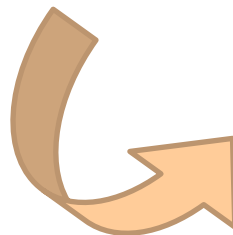
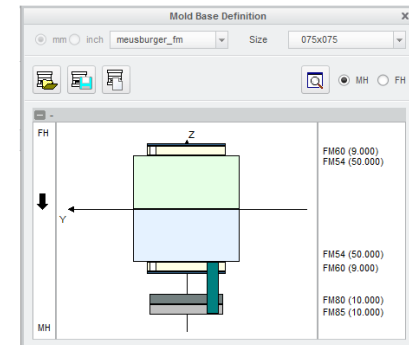
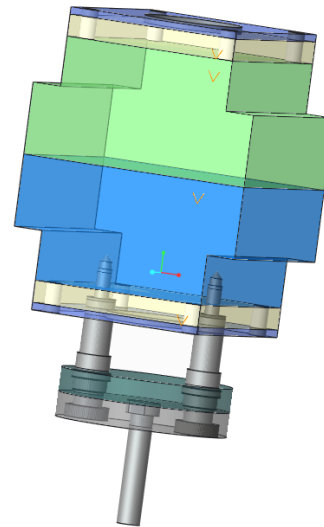
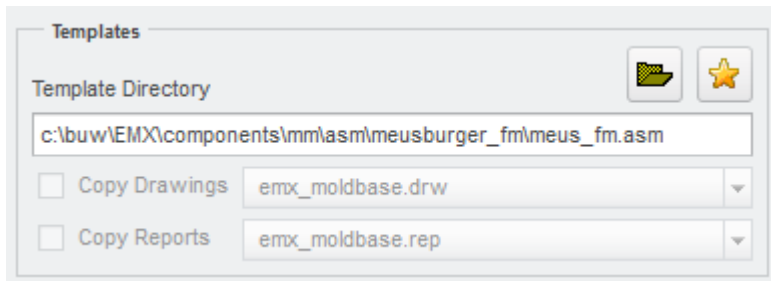


# Enhancements

## Enhancement 6

Meusburger Babyplast/Micromolds FM Series added.

Create new EMX project, but select Babyplast template:



## Enhancements

---


### Enhancement 7

New option CHECK\_RELATIONS\_WHEN\_OPEN\_BOM allows checking and adding relations defined in emx\_comp.rel files to all components listed in BOM.

Relation can be added to non-EMX components.

### Enhancement 8

Modify and Delete component can be used when selecting component reference groups with right mouse button from model tree.

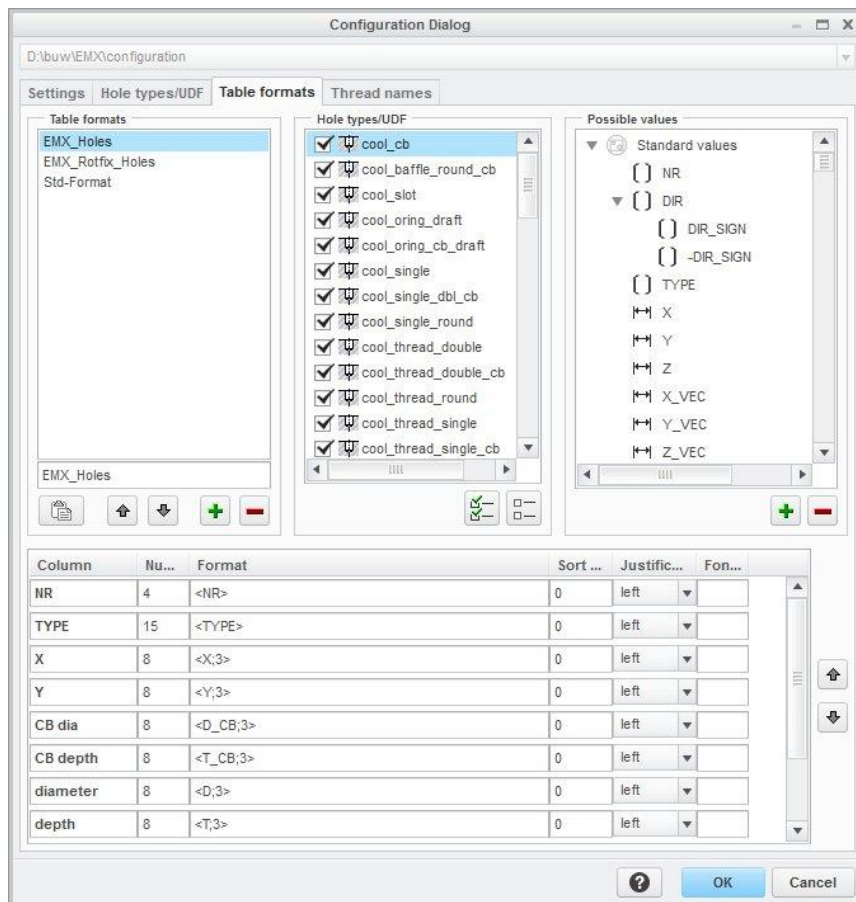
A decorative graphic element consisting of a thick grey curved line and a thin orange curved line at the bottom right of the slide.



# Enhancements

## Enhancement 8

For Smart Holechart all EMX UDF bore types are shipped.



# Components

---

## Components

- MEUSBURGER: E1690 - Contour tunnel gate inset
- DME: PMX - Side interlock

## Additional Info

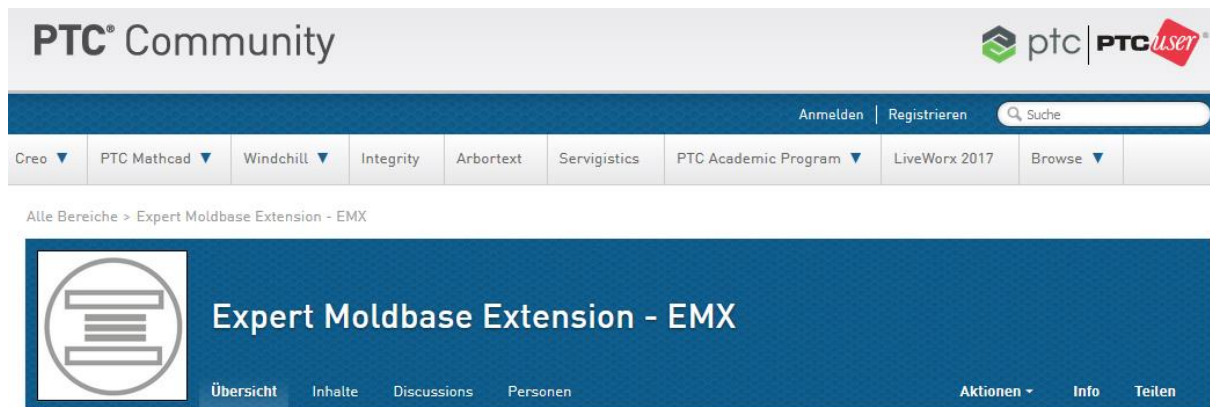
---

### Join the PTC User Community!

You will find:

- Discussions
- Videos
- Blog posts

### PTC User Community EMX Group



The screenshot shows the PTC Community website interface. At the top left is the "PTC® Community" logo. To the right are the "ptc" and "PTC UserSet" logos. Below the header is a navigation bar with links for "Anmelden" and "Registrieren", and a search bar labeled "Suche". A secondary navigation bar lists various software categories: "Creo", "PTC Mathcad", "Windchill", "Integrity", "Arbortext", "Servigistics", "PTC Academic Program", "LiveWorx 2017", and "Browse". Below this, the breadcrumb "Alle Bereiche > Expert Moldbase Extension - EMX" is visible. The main content area features a blue header for the "Expert Moldbase Extension - EMX" group, which includes a circular icon with a document symbol. Below the group name are navigation tabs for "Übersicht", "Inhalte", "Discussions", and "Personen". At the bottom right of the group header are links for "Aktionen", "Info", and "Teilen".