

# Creo Intelligent Fastener 8.0.0.0

*What's New*



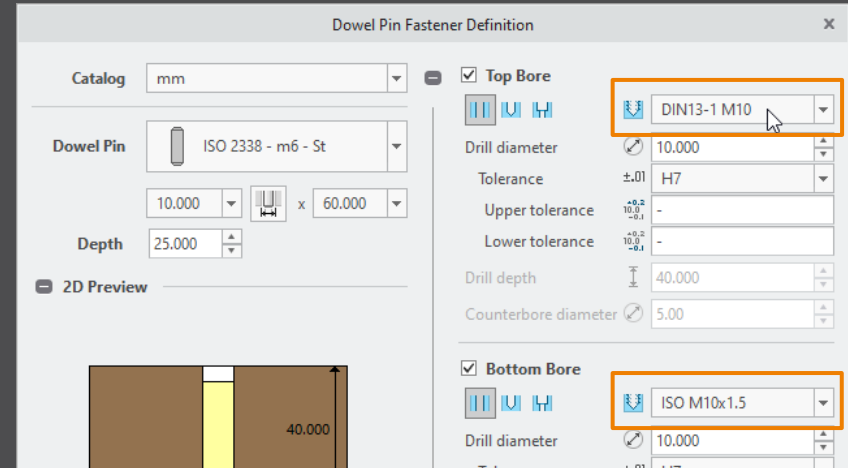
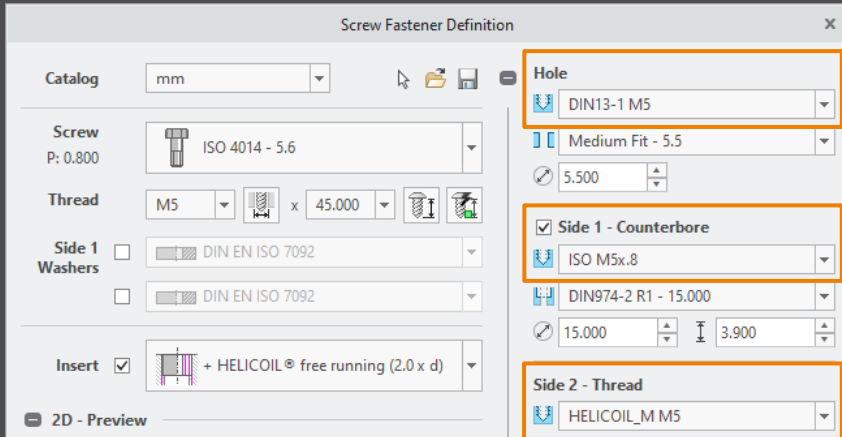
# Select hole chart for IFX holes

## Advantages

- Use different hole charts for different fastener types.
- Show different hole notes.
- Control the counterbore diameter with CBOREDIAM.

## Details/ Usage

- Select hole chart for IFX holes if more then one is found.
- Use the new keyword `THREAD_NAME` in your fastener data file to preselect a hole chart.



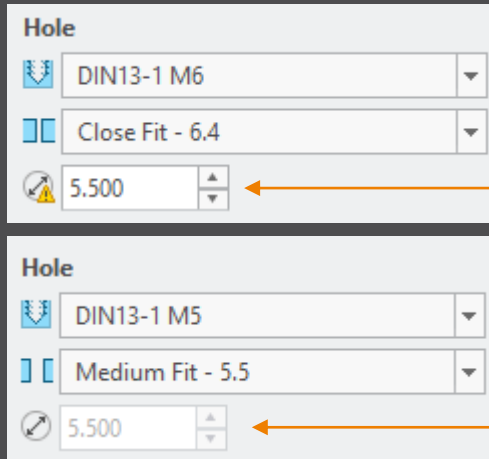
# Add option to control clearance hole behavior

## Advantages

- Use the same behavior than Creo Parametric.
- Allow to disable limits for the hole diameter.

## Details/ Usage

- Control hole diameter behavior in the Screw Fastener Definition dialog box inside the Hole layout.
- Control the limits for the hole and set the diameter to read only.



### *CLEARANCE\_HOLE\_USE\_LIMITS*

- YES – Set limits for min. and max. clearance hole diameter.
- NO – Do not set any limits for clearance hole diameter.

### *CLEARANCE\_HOLE\_DIAMETER\_OVERRIDE*

- CREO\_DEFAULT – Use the value of the *hole\_diameter\_override* configuration option.
- YES – Allow specifying the clearance hole value, instead of the standard value.
- NO – Use the standard clearance hole diameter value.

# Use option *drilled\_hole\_tip\_angle* in IFX

## Advantages

- Intelligent fastener use same settings as Creo Parametric.
- No need to change the tip angle afterwards.

## Details/ Usage

- If the Creo Parametric option *drilled\_hole\_tip\_angle* is set, IFX uses this value.
- If the option is not set, the default angle  $118^\circ$  is used.

