



Creo Intelligent Fastener 8.0

What's New



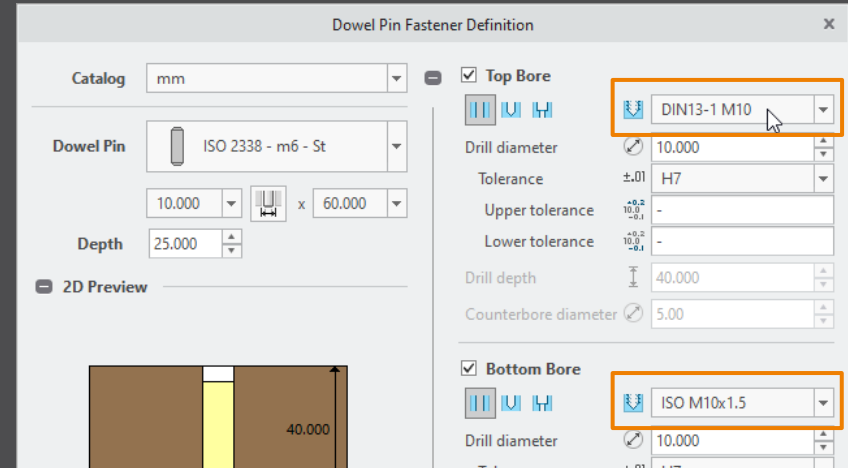
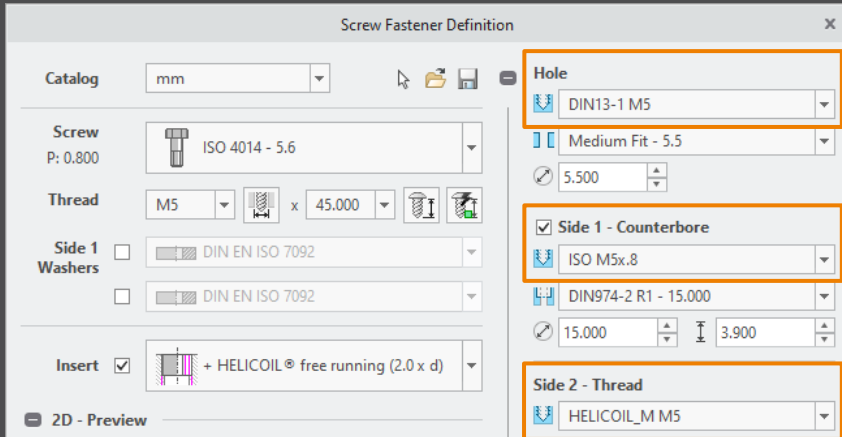
Select hole chart for IFX holes

Advantages

- Use different hole charts for different fastener types.
- Show different hole notes.
- Control the counterbore diameter with CBOREDIAM.

Details/ Usage

- Select hole chart for IFX holes if more then one is found.
- Use the new keyword THREAD_NAME in your fastener data file to preselect a hole chart.



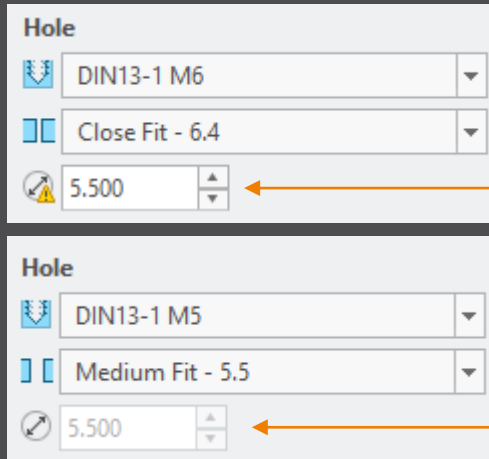
Add option to control clearance hole behavior

Advantages

- Use the same behavior than Creo Parametric.
- Allow to disable limits for the hole diameter.

Details/ Usage

- Control hole diameter behavior in the Screw Fastener Definition dialog box inside the Hole layout.
- Control the limits for the hole and set the diameter to read only.



CLEARANCE_HOLE_USE_LIMITS

- YES – Set limits for min. and max. clearance hole diameter.
- NO – Do not set any limits for clearance hole diameter.

CLEARANCE_HOLE_DIAMETER_OVERRIDE

- CREO_DEFAULT – Use the value of the *hole_diameter_override* configuration option.
- YES – Allow specifying the clearance hole value, instead of the standard value.
- NO – Use the standard clearance hole diameter value.

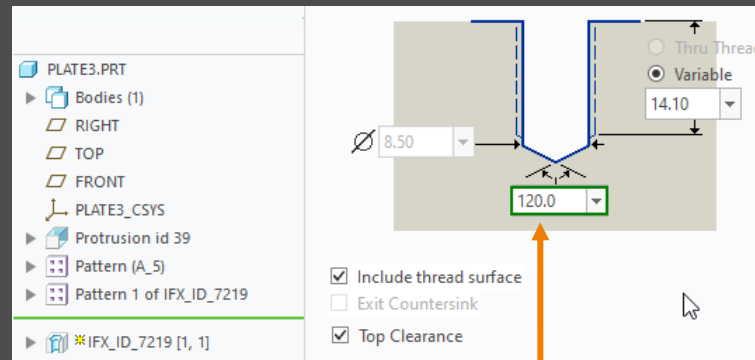
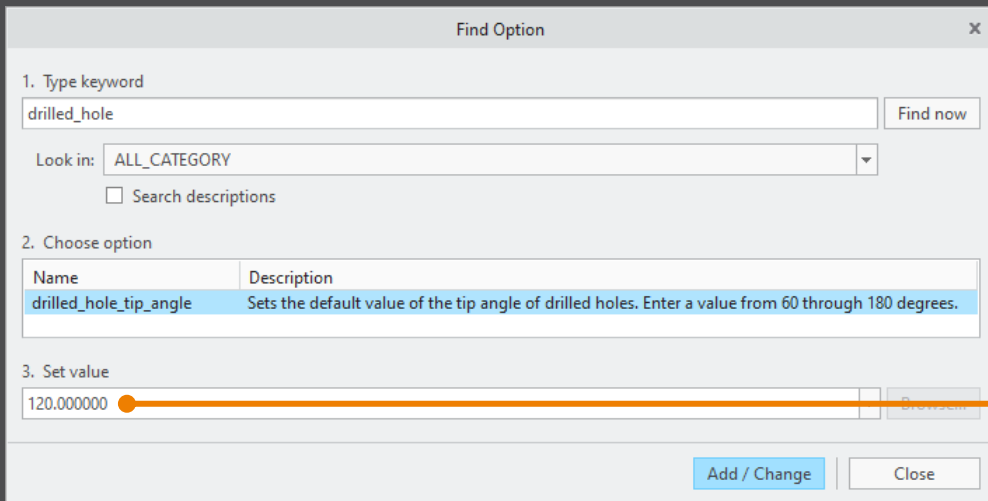
Use option *drilled_hole_tip_angle* in IFX

Advantages

- Intelligent fastener use same settings as Creo Parametric.
- No need to change the tip angle afterwards.

Details/ Usage

- If the Creo Parametric option *drilled_hole_tip_angle* is set, IFX uses this value.
- If the option is not set, the default angle 118° is used.



More Enhancements and Fixes

For more information see [changelog.html](#).