



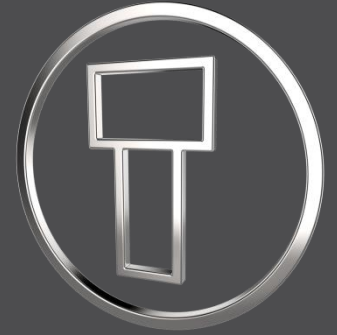
Creo Intelligent Fastener 8.0.7.0

What's New



Fixed Bugs

- For inserts, the pitch 'P' was used instead of 'P1' to determine the hole thread series.
- The creation of holes was improved.
If an edge was hit on the exit surface, the hole was not created.
SPR-13818141; C-16381450
- The problem with redefining a screw with an insert has been fixed.
The 'BASIC_DIAM' and 'THREAD' diameters of the screw instead of the insert were used to get the hole diagram.
- Problem with resetting the hole note fixed. The 'RUN_MAPKEY_*' options have been removed. New API is used to reset the note.
SPR-13760849
- For more information see [changelog.html](#).



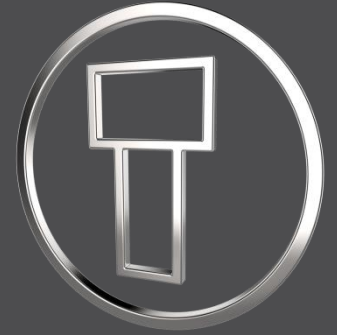
Creo Intelligent Fastener 8.0.6.1

What's New



Changes

- Fixed an error when reading *.dat files with #FAMTAB.



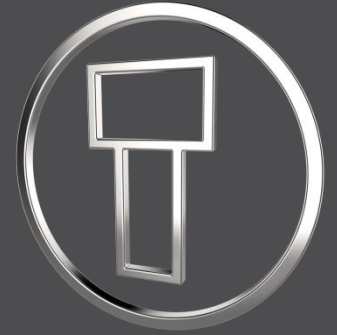
Creo Intelligent Fastener 8.0.6.0

What's New



Changes

- Fixed problem with *.dat file having lines with the empty tabs. In this case the size was shown as 0 (zero). *SPR-13807791*
- Fixed reading of hole charts regarding 12 or 18 columns. *SPR-13804155*
- Fixed problem with hole tables while creating and redefining a dowel pin. *SPR-13773021*
- Fixed problem with the determination of the minimum and maximum diameter of the countersink. *C16322899*
- Remove blanks at the end of an instance name.



Creo Intelligent Fastener 8.0.5.0

What's New



Changes

- Set thread depth to 'Through Thread' if a hole with through thread is selected. SPR-13264653
- If a translation file is missing, the name of the file is output in the trail file. SPR-13567673
- Fixed problem with placement of nut or insert in subassembly.
- Fixed an error when reading *.dat files. If a line contained more than 256 characters, a crash occurred.
- Fixed problem in search of 'Load Screw Fastener' dialog.



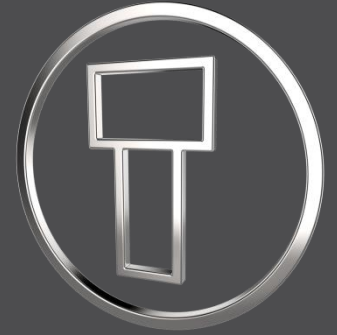
Creo Intelligent Fastener 8.0.4.0

What's New



Fixed Bugs

- Problem with redefinition of countersunk screws fixed.
- Fixed Creo crash when Redefine a screw fastener. SPR-13483120
- Fixed a problem in the screw dialog file. If the 'STRING' contains a space, the file is corrupted.
- Fix diameter error in 'Unhardened_Ground.dat'.
Change wrong diameters to '0.6250'.
- Fix error in 'dowelpin*.hol' files. SPR-8702705
- For more information see [changelog.html](#).



Creo Intelligent Fastener 8.0.3.0

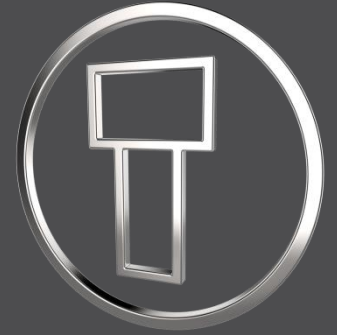
What's New



Fixed Bugs

- Fixed error "No hole charts found for this hole types" when placing dowel pin Fastener. SPR-8702705
- Fixed problems while regenerating relations.
- A gap was created between the fastener and the placement surface while placing a fastener on very thin models. SPR-13085083
- Reading of *.hol files in IFX reworked.
- Add corruption check for IFX fastener groups. SPR-10503770
- Option 'GEN_DIGITS' removed. SPR-12778104
- Rework functionality if 'HOLE_VISIBILITY' is set to 'NO'. SPR-13074974

- For more information see [changelog.html](#).



Creo Intelligent Fastener 8.0.2.0

What's New



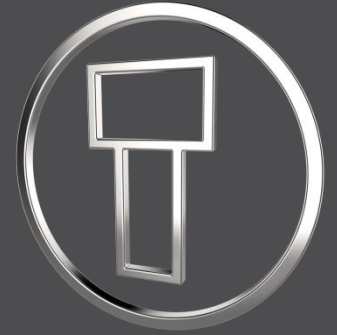
Enhancements and Fixes

Enhancements

- Add Additional Tools information offered by B&W Software GmbH

Bug Fixes

- UI-Strings are not translated in version 8.0.1.0



Creo Intelligent Fastener 8.0.1.0

What's New



Enhancements and Fixes

Enhancements

- SPR 11357093: Support unicode characters in param_relation.txt.
- SPR 11285257: Disallow thread-surfaces as a position reference.
- Add new INCREMENT_* options to control the increment value of the spin box for diameter and depth values.
- Support body colors for 2D-preview.

Bug Fixes

- SPR 12035414: Fix problem while adding a fastener with option assemble fastener on all instances (from a pattern).
- Fix problems in hole chart layout.
- Fix problem with offset '-0.1' for screw-in connections.
- Fix problem with new designated parameters from 'ifx_start_mdl.cfg'. If the parameter is also used in a 'param_relation.txt' then the designation status gets lost.
- Fix for COLOR_HOLES option.



Creo Intelligent Fastener 8.0.0.0

What's New



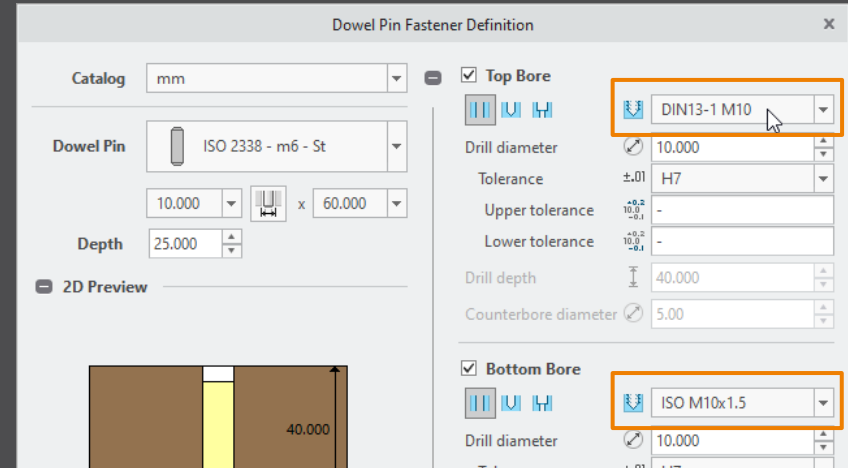
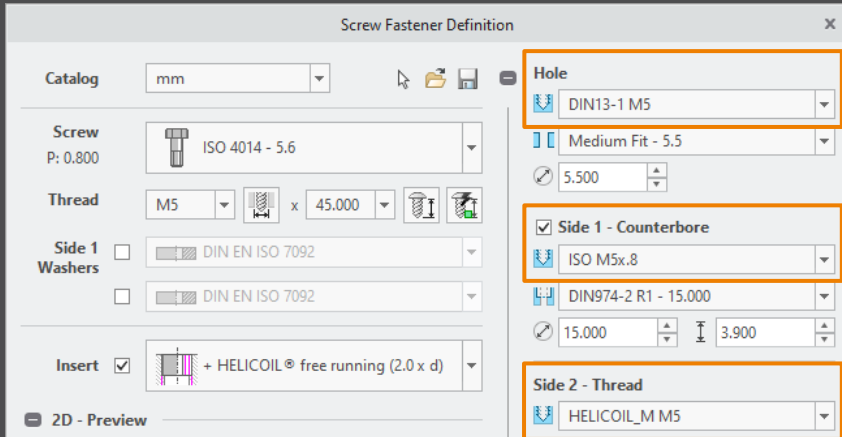
Select hole chart for IFX holes

Advantages

- Use different hole charts for different fastener types.
- Show different hole notes.
- Control the counterbore diameter with CBOREDIAM.

Details/ Usage

- Select hole chart for IFX holes if more then one is found.
- Use the new keyword THREAD_NAME in your fastener data file to preselect a hole chart.



Add option to control clearance hole behavior

Advantages

- Use the same behavior than Creo Parametric.
- Allow to disable limits for the hole diameter.

Details/ Usage

- Control hole diameter behavior in the Screw Fastener Definition dialog box inside the Hole layout.
- Control the limits for the hole and set the diameter to read only.

The image shows two screenshots of the 'Hole' dialog box in a software application. The top screenshot shows a hole defined as 'DIN13-1 M6' with a 'Close Fit - 6.4' and a clearance diameter of '5.500'. An orange arrow points from the '5.500' value to the text 'CLEARANCE_HOLE_USE_LIMITS'. The bottom screenshot shows a hole defined as 'DIN13-1 M5' with a 'Medium Fit - 5.5' and a clearance diameter of '5.500'. An orange arrow points from the '5.500' value to the text 'CLEARANCE_HOLE_DIAMETER_OVERRIDE'.

CLEARANCE_HOLE_USE_LIMITS

- YES – Set limits for min. and max. clearance hole diameter.
- NO – Do not set any limits for clearance hole diameter.

CLEARANCE_HOLE_DIAMETER_OVERRIDE

- CREO_DEFAULT – Use the value of the *hole_diameter_override* configuration option.
- YES – Allow specifying the clearance hole value, instead of the standard value.
- NO – Use the standard clearance hole diameter value.

Use option *drilled_hole_tip_angle* in IFX

Advantages

- Intelligent fastener use same settings as Creo Parametric.
- No need to change the tip angle afterwards.

Details/ Usage

- If the Creo Parametric option *drilled_hole_tip_angle* is set, IFX uses this value.
- If the option is not set, the default angle 118° is used.

