



# Creo Intelligent Fastener 8.0.9.1

*What's New*



# Enhancements and Fixes

## Enhancements

- Output ifx.log to <personal>\buw\IFX\logs\<>version>

## Bug Fixes

- A message that was too long caused a crash. *SPR-14797981*

For more information see [changelog.html](#).



# Creo Intelligent Fastener 8.0.9.0

*What's New*



# Enhancements and Fixes

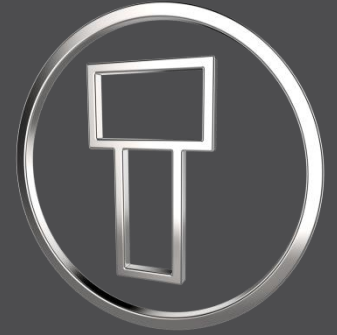
## Enhancements

- Before retrieving, check if a fastener exists to avoid the message: *'fastener-mdl' cannot be retrieved.*  
If the fastener model does not yet exist, create it using the template.
- Ignore values (e.g. tabs and spaces) behind 'THREAD\_DATA' in hole charts.
- Use API 'ProElementHole\*Set()' to set thread series and screw size by value.
- Add screw option 'COUNTERSINK\_HOLE\_USE\_LIMITS'.  
*SPR-14504539; SPR-14536820*
- Verify library files part 1. *SPR-14387616*

## Bug Fixes

- Parameter values for the 'BUW\_\*\_ID\*' fastener component parameters were set to '0' during redefinition.
- Solved problem for screw-in fasteners. Offset (depth) was set to '-0.1'.
- Consider hole charts in working directory. *SPR-14386755*
- Only accept cylindrical surfaces as multi-reference.

For more information see [changelog.html](#).



# Creo Intelligent Fastener 8.0.8.0

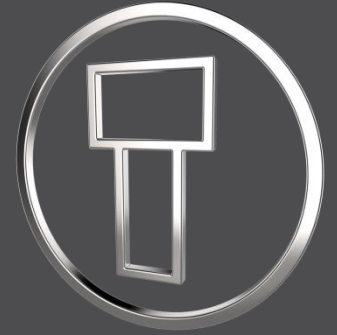
*What's New*



# Fixed Bugs

---

- Fixed a problem related to redefining fasteners in subassemblies.
- An issue related to the placement of fasteners on assembly cut surfaces has been fixed. *SPR-14146142, C-16584416*
- Fixed an error when reading \*.dat files. If there was a space in the first column, there were problems when placing fasteners.  
*SPR-14131006, SPR-14130745, C-16573455*
- For more information see [changelog.html](#).



# Creo Intelligent Fastener 8.0.7.0

*What's New*



# Fixed Bugs

- For inserts, the pitch 'P' was used instead of 'P1' to determine the hole thread series.
- The creation of holes was improved.  
If an edge was hit on the exit surface, the hole was not created.  
*SPR-13818141; C-16381450*
- The problem with redefining a screw with an insert has been fixed.  
The 'BASIC\_DIAM' and 'THREAD' diameters of the screw instead of the insert were used to get the hole diagram.
- Problem with resetting the hole note fixed. The 'RUN\_MAPKEY\_\*' options have been removed. New API is used to reset the note.  
*SPR-13760849*
- For more information see [changelog.html](#).





# Creo Intelligent Fastener 8.0.6.1

*What's New*



# Changes

---

- Fixed an error when reading \*.dat files with #FAMTAB.



# Creo Intelligent Fastener 8.0.6.0

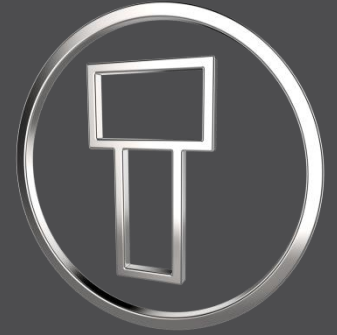
*What's New*



# Changes

---

- Fixed problem with \*.dat file having lines with the empty tabs. In this case the size was shown as 0 (zero). *SPR-13807791*
- Fixed reading of hole charts regarding 12 or 18 columns. *SPR-13804155*
- Fixed problem with hole tables while creating and redefining a dowel pin. *SPR-13773021*
- Fixed problem with the determination of the minimum and maximum diameter of the countersink. *C16322899*
- Remove blanks at the end of an instance name.



# Creo Intelligent Fastener 8.0.5.0

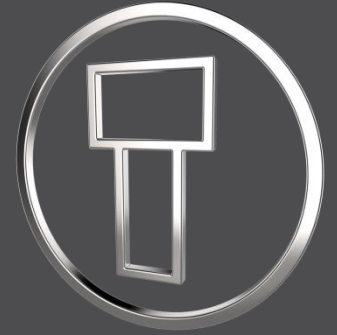
*What's New*



# Changes

---

- Set thread depth to 'Through Thread' if a hole with through thread is selected. SPR-13264653
- If a translation file is missing, the name of the file is output in the trail file. SPR-13567673
- Fixed problem with placement of nut or insert in subassembly.
- Fixed an error when reading \*.dat files. If a line contained more than 256 characters, a crash occurred.
- Fixed problem in search of 'Load Screw Fastener' dialog.



# Creo Intelligent Fastener 8.0.4.0

*What's New*



# Fixed Bugs

---

- Problem with redefinition of countersunk screws fixed.
- Fixed Creo crash when Redefine a screw fastener. SPR-13483120
- Fixed a problem in the screw dialog file. If the 'STRING' contains a space, the file is corrupted.
- Fix diameter error in 'Unhardened\_Ground.dat'.  
Change wrong diameters to '0.6250'.
- Fix error in 'dowelpin\*.hol' files. SPR-8702705
- For more information see [changelog.html](#).





# Creo Intelligent Fastener 8.0.3.0

*What's New*



# Fixed Bugs

---

- Fixed error "No hole charts found for this hole types" when placing dowel pin Fastener. SPR-8702705
- Fixed problems while regenerating relations.
- A gap was created between the fastener and the placement surface while placing a fastener on very thin models. SPR-13085083
- Reading of \*.hol files in IFX reworked.
- Add corruption check for IFX fastener groups. SPR-10503770
- Option 'GEN\_DIGITS' removed. SPR-12778104
- Rework functionality if 'HOLE\_VISIBILITY' is set to 'NO'. SPR-13074974
- For more information see [changelog.html](#).



# Creo Intelligent Fastener 8.0.2.0

*What's New*



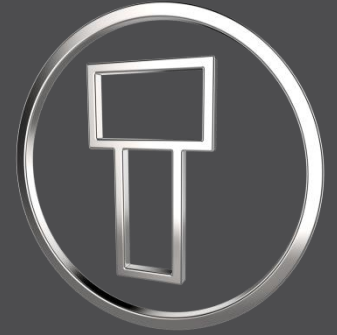
# Enhancements and Fixes

## Enhancements

- Add Additional Tools information offered by B&W Software GmbH

## Bug Fixes

- UI-Strings are not translated in version 8.0.1.0



# Creo Intelligent Fastener 8.0.1.0

*What's New*



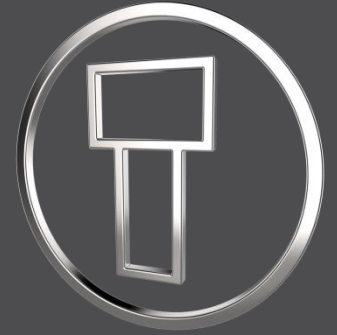
# Enhancements and Fixes

## Enhancements

- SPR 11357093: Support unicode characters in param\_relation.txt.
- SPR 11285257: Disallow thread-surfaces as a position reference.
- Add new INCREMENT\_\* options to control the increment value of the spin box for diameter and depth values.
- Support body colors for 2D-preview.

## Bug Fixes

- SPR 12035414: Fix problem while adding a fastener with option assemble fastener on all instances (from a pattern).
- Fix problems in hole chart layout.
- Fix problem with offset '-0.1' for screw-in connections.
- Fix problem with new designated parameters from 'ifx\_start\_mdl.cfg'. If the parameter is also used in a 'param\_relation.txt' then the designation status gets lost.
- Fix for COLOR\_HOLES option.



# Creo Intelligent Fastener 8.0.0.0

*What's New*



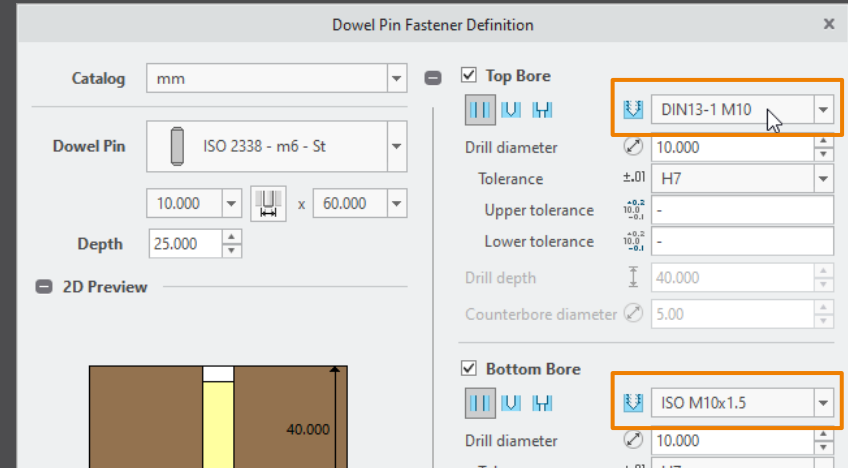
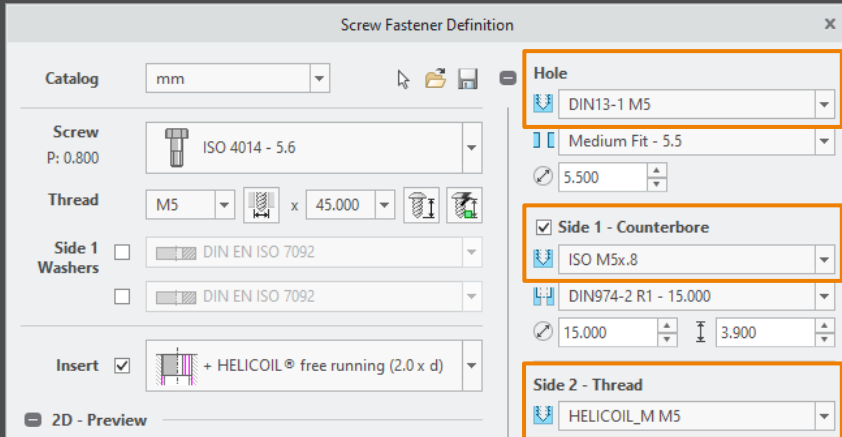
# Select hole chart for IFX holes

## Advantages

- Use different hole charts for different fastener types.
- Show different hole notes.
- Control the counterbore diameter with CBOREDIAM.

## Details/ Usage

- Select hole chart for IFX holes if more then one is found.
- Use the new keyword THREAD\_NAME in your fastener data file to preselect a hole chart.





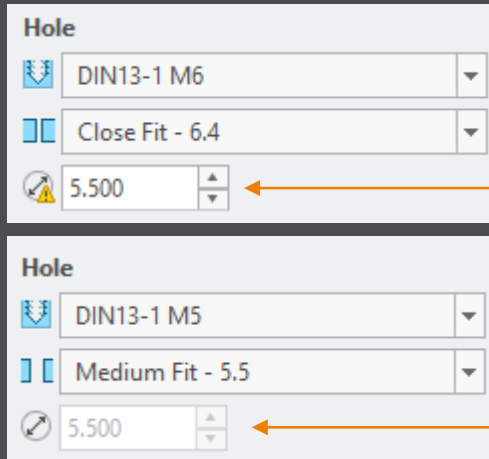
# Add option to control clearance hole behavior

## Advantages

- Use the same behavior than Creo Parametric.
- Allow to disable limits for the hole diameter.

## Details/ Usage

- Control hole diameter behavior in the Screw Fastener Definition dialog box inside the Hole layout.
- Control the limits for the hole and set the diameter to read only.



### *CLEARANCE\_HOLE\_USE\_LIMITS*

- YES – Set limits for min. and max. clearance hole diameter.
- NO – Do not set any limits for clearance hole diameter.

### *CLEARANCE\_HOLE\_DIAMETER\_OVERRIDE*

- CREO\_DEFAULT – Use the value of the *hole\_diameter\_override* configuration option.
- YES – Allow specifying the clearance hole value, instead of the standard value.
- NO – Use the standard clearance hole diameter value.

# Use option *drilled\_hole\_tip\_angle* in IFX

## Advantages

- Intelligent fastener use same settings as Creo Parametric.
- No need to change the tip angle afterwards.

## Details/ Usage

- If the Creo Parametric option *drilled\_hole\_tip\_angle* is set, IFX uses this value.
- If the option is not set, the default angle 118° is used.

