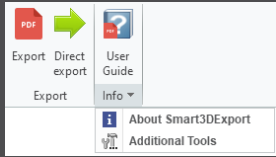


SMART3DExport
8.1.0.0
- *What's new* -

02.01.2023

User mode

- New Ribbon UI

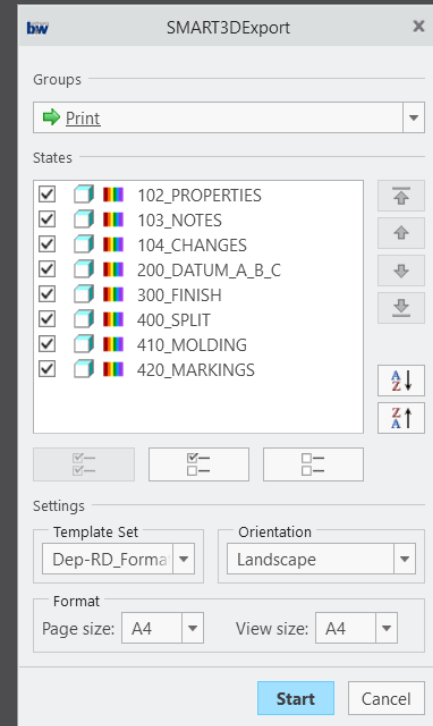


- Overhauled User Guide
 - Opens within internal Creo Browser



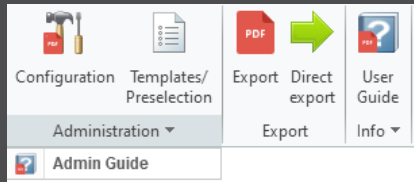
User mode

- Improved Export dialog
 - Single ,Export' dialog
 - Enhanced Combined States selection
 - Select all, de-select all, invert selection
 - Sorting capabilities
 - Easy template and page size selection
 - Better support for multiple Combined States on a larger sheet



Admin mode

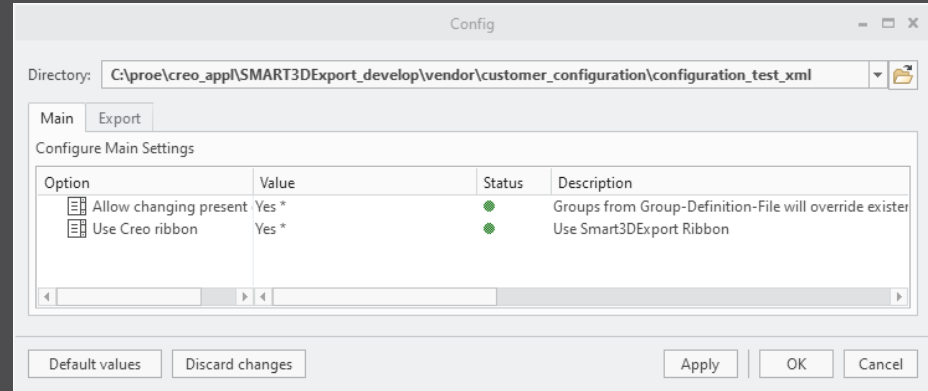
- Configuration files transferred to XML
- Distinction between User and Admin mode
 - Environment variable `S3DX_ADMIN_MODE_ENABLED=TRUE`
- New Admin mode ribbon UI



- Admin Guide introduced
 - Available from Admin mode ribbon
 - Opens in internal browser

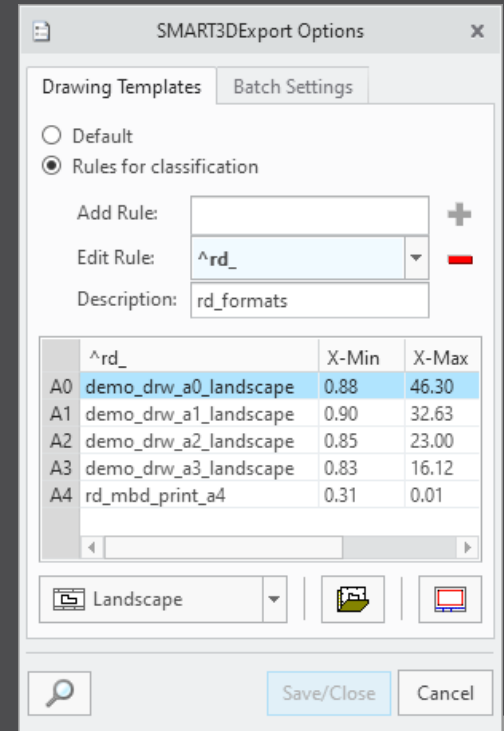
Admin mode

- New Configuration dialog



Admin mode

- Improved Templates setup
 - Direct access from Admin mode ribbon
 - Default paste range for new templates
 - Easier paste range selection



Admin mode

- Group definition
 - Still a manual file editing (now .xml)
 - System groups
 - ALL – all Combined States
 - ACTIVE – active Combined State
 - New attribute
 - Creo Published Combined States
- Will be constantly improved

```
<?xml version="1.0" encoding="UTF-8"?>
<Definition>
  <GroupDefinitionParameter>BUW_CLASS</GroupDefinitionParameter>
  <AllGroupDefaultStates>\d</AllGroupDefaultStates>
  <RuleSets>
    <RuleSet>
      <Name>rule_2</Name>
      <GroupPreDefinitions>
        <GroupPreDefinition>
          <Name>Work2</Name>
          <IsDefault>0</IsDefault>
          <IsBatch>0</IsBatch>
          <UseColor>1</UseColor>
          <UseOnlyPublishedStates>1</UseOnlyPublishedStates>
          <RegexDefaultState>001_ASM</RegexDefaultState>
          <RegexStatesToInclude>^00|STANDARD\sALLE|DEFAULT\sALL</R
          <DisplayStyle>shade</DisplayStyle>
        </GroupPreDefinition>
        <GroupPreDefinition>
          <Name>Doku2</Name>
          <IsDefault>1</IsDefault>
          <IsBatch>0</IsBatch>
          <UseColor>0</UseColor>
          <UseOnlyPublishedStates>1</UseOnlyPublishedStates>
          <RegexDefaultState>001_ASM</RegexDefaultState>
          <RegexStatesToInclude>001_ASM|^0[1-9]|^1[0-9]|STANDARD\s
          <DisplayStyle>shadewithreflect</DisplayStyle>
        </GroupPreDefinition>
        <GroupPreDefinition>
          <Name>Print2</Name>
          <IsDefault>0</IsDefault>
          <IsBatch>1</IsBatch>
          <UseColor>1</UseColor>
          <UseOnlyPublishedStates>1</UseOnlyPublishedStates>
          <RegexDefaultState>300_TOP</RegexDefaultState>
          <RegexStatesToInclude>^0[1-9]</RegexStatesToInclude>
          <DisplayStyle>hiddeninvis</DisplayStyle>
        </GroupPreDefinition>
      </GroupPreDefinitions>
    </RuleSet>
  </RuleSets>
</Definition>
```