



# SMARTElectrode 13.0.1.0

*What's New*



# Improvement

## What

- All configuration files are now considered as encoded in UTF-8
- <https://redmine.buw-soft.de/issues/10943>

## Why

- Necessary for updated interfaces to EDM

## How

- Please use a tool like Notepad++ to convert if necessary
- Files using ASCII standard characters don't need any special handling

# Improvement

## What

- Introduced 'Getting started' document
- <https://redmine.buw-soft.de/issues/10749>

## Why

- This document explains briefly how to start working with SMARTElectrode

## How

- Open 'Getting started' from
  - Installation directory
  - Download server:  
<https://dl.buw-soft.de/smartelectrode/guides/getting-started.pdf>
- Some of the topics covered
  - Configure license / Register and start SE
  - Setting up a configuration / How to use setup wizard
  - Creo options / SMARTElectrode Options
  - Workflow in SMARTElectrode
  - Parameters
  - Base UI
  - Customizing electrode templates
  - Drawing Creation

# Enhancement

## What

- Sort electrodes by parameter value before export
- <https://redmine.buw-soft.de/issues/10575>

## Why

- Some customers need to output electrodes in a specific sort order

## How

- Two new keywords can be used in any export configuration (export.cfg)
  - SE\_ORDER\_BY  
Define parameter by parameter name (1<sup>st</sup> column) or parameter default (last column; include &)
  - SE\_SORT\_ORDER  
Defines sort order: ASC, ASCENDING, DESC, DESCENDING
- Sorting works for strings, doubles and integers
- Only sort by part parameters!

```
SE_ORDER_BY · &BURNAREA_XY  
SE_SORT_ORDER · DESCENDING
```

```
SE_ORDER_BY · BRENNFLAECHE  
SE_SORT_ORDER · DESCENDING
```

```
BURNAREA · ID · NAME  
361.980 · 11 · JS748100_AS_EDM_11  
157.062 · 12 · JS748100_AS_EDM_12  
156.671 · 12 · JS748100_AS_EDM_12  
28.102 · 10 · JS748100_AS_EDM_10  
28.102 · 10 · JS748100_AS_EDM_10  
25.607 · 3 · JS748100_AS_EDM_03
```

# Improvement

## What

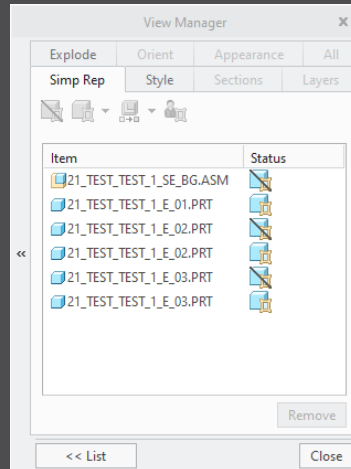
- Consider default action (include/exclude) of simplified representation when valid components for export are collected
- <https://redmine.buw-soft.de/issues/11020>

## Why

- Allow usage of master representation for example

## How

- All valid items in simprep are collected automatically by SMARTElectrode



# Improvement

## What

- Updated advanced interface for Zimmer&Kreim Alphamoduli
- <https://redmine.buw-soft.de/issues/7864>

## How

- Processor files include updated list of orbits
- Additional supported XML tags in export
  - MeasDim
  - MeasProgType
  - MeasSizeX
  - MeasSizeY
  - MeasSizeZ
  - MeasZPointX
  - MeasZPointY
  - MeasZPointZ
  - EdgeDistance
  - SafetyDistance
- Please contact us for detailed information and setup!



ZK\_Deutsch.zip



ZK\_English.zip

# Improvement

## What

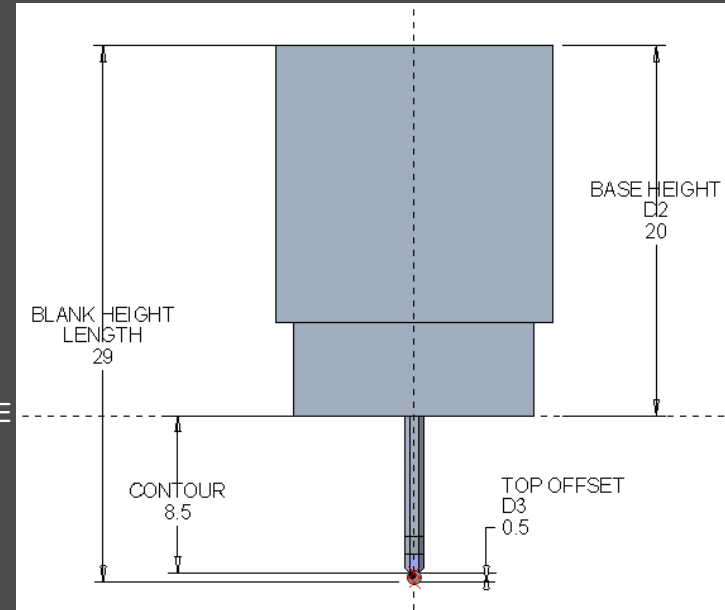
- Round contour height to even value in Base UI
- <https://redmine.buw-soft.de/issues/5550>

## Why

- For users more interested in an even contour height than in a rounded position

## How

- Mandatory settings:
  - INCREMENT\_POS = 0
  - INCREMENT\_SIZE > 0
- Height of contour will be rounded to a value, where
  - D1 corresponds at least to value in data file
  - D3 corresponds exactly to value in data file
  - Contour height is rounded to INCREMENT\_SIZE
- Should be combined with a free value
  - blank length (LENGTH = -1) or
  - base height (D2 = -1)



# Improvement

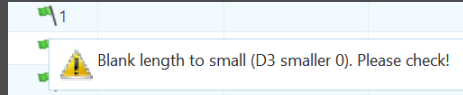
## What

- Show warning in Burnsheat UI if blank length is too small
- <https://redmine.buw-soft.de/issues/8494>

## Why

- Base is **NOT** changed by SMARTElectrode after creation
  - Position of base is retained
  - Size of base is retained
- User is in control whether the base must be revised
- Open Base UI to update values interactively
- Suppress base before Base UI is opened  
→ this starts automatic check and adjustment again

## How



|         |                                     |   |    |        |
|---------|-------------------------------------|---|----|--------|
| A_BASE  | 15.000                              |   | D1 | 1.000  |
| B_BASE  | 15.000                              |   | D2 | 34.000 |
| LENGTH  | 37.155                              |   | D3 | -0.700 |
| CHAMFER | <input type="checkbox"/>            | Blank length to small (D3 smaller 0). Please check! |    |        |
| FRAME   | <input checked="" type="checkbox"/> | 3.200   |    | 1.000  |



# Improvement

## What

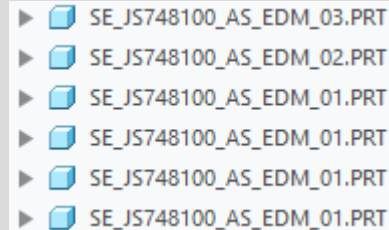
- Burnsheet UI / Output UI: electrodes are ordered by feature number per default
- <https://redmine.buw-soft.de/issues/10409>

## Why

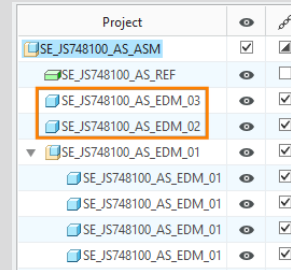
- A distinctive electrode sequence is necessary for the output occasionally

## How

- Change order of electrodes in modeltree using drag and drop
- The first appearance of an electrode determines the order for the output



Order in modeltree



Order in Burnsheet UI

# Improvement

## What









- Show notifications for Burnsheat UI node on mouse-over
- <https://redmine.buw-soft.de/issues/10421>


## Why

- As a quick information for the user

## How

- Move mouse cursor over node if notifications available
- Click on notification to open detailed description in separate window and filter display

| Project   |  |  | Status  |
|---|---|---|---|
|  38177-20_SE_BG  | <input checked="" type="checkbox"/>   | <input checked="" type="checkbox"/>   |    |
|  38177-20_SE_REF | <input type="checkbox"/>  | <input type="checkbox"/>  |    |
|  38177-20-061    | <input type="checkbox"/>  | <input type="checkbox"/>  |  1 |

 Base not centered on solid.

# Improvement

## What

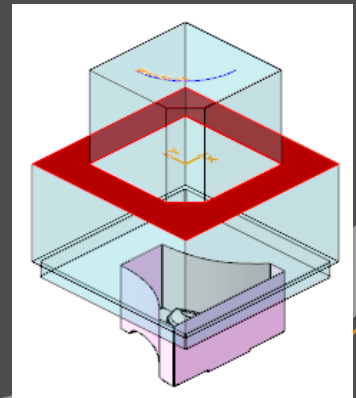
- Use blank dimensions A\_BASE and B\_BASE for coverage check
- <https://redmine.buw-soft.de/issues/10622>

## Why

- CONTACT\_AREA\_MAX\_COVERAGE defines valid percentage of coverage
- SMARTElectrode used area of 'BASE\_TOP' leading to too small areas if clamp is part of electrode

## How

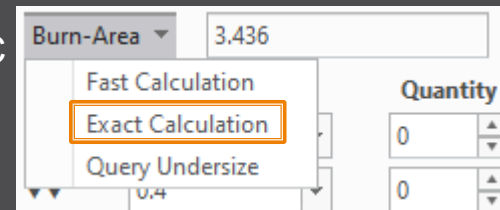
- SMARTElectrode evaluates blank area by base dimensions if available
- 'BASE\_TOP' surface may be used for imported electrodes
- More information about check for calculated burnarea projection:  
<https://redmine.buw-soft.de/issues/10622>



# Improvement

## What

- Allow cancelation of exact burnarea analysis on ESC
- <https://redmine.buw-soft.de/issues/10504>

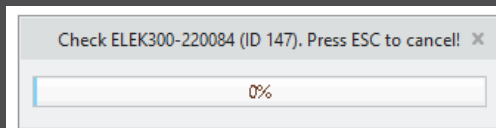


## Why

- Some surface types lead to lengthy analyzes

## How

- Press **ESC** during analysis in Base or Check UI to cancel calculation



| Options                  |                       |                                     |                        |              |
|--------------------------|-----------------------|-------------------------------------|------------------------|--------------|
| <input type="checkbox"/> | Interference          | <input checked="" type="checkbox"/> | Touching Faces         |              |
| <input type="checkbox"/> | Assign Colors         | <input type="checkbox"/>            | Consider Undersize     |              |
| <input type="checkbox"/> | Calculate Undersize   | <input checked="" type="checkbox"/> | Effective Contact Area |              |
| Results                  |                       |                                     |                        |              |
| ?                        | Electrode             | Touching Surface                    | Projection Area        | Interference |
| <b>i</b>                 | SE_JS748100_AS_EDM_01 |                                     | 3.18557                | ✓            |
| <b>i</b>                 | SE_JS748100_AS_EDM_01 |                                     | 3.18557                | ✓            |
| <b>i</b>                 | SE_JS748100_AS_EDM_01 |                                     | 3.18557                | ✓            |
| <b>i</b>                 | SE_JS748100_AS_EDM_01 |                                     | 3.18557                | ✓            |
| <b>i</b>                 | SE_JS748100_AS_EDM_02 | Cancelled                           | 0                      | ✓            |
|                          | All                   | 36                                  | 12.7423                | 0            |

# Improvement

## What

- Allow adjustment of assembly accuracy if inconsistent values are found
- <https://redmine.buw-soft.de/issues/10414>

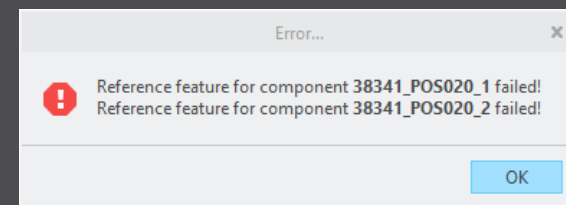
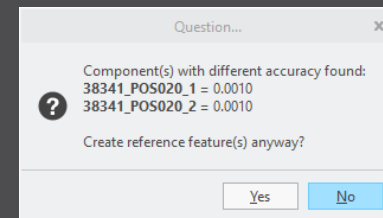
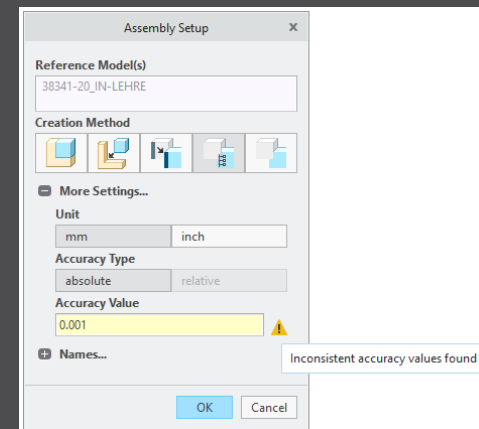
## Why

- Same accuracy and type should be used in complete assembly
- Inconsistent accuracies may lead to errors

## How

- Warning will be displayed in assembly UI
- Input will be preset to smallest accuracy found
- Additional warning will be shown before creation of reference model
- Errors will be displayed afterwards

- **NOTE**  
SMARTElectrode does not change accuracy of the original models! This is because SE can't evaluate if change of accuracy is allowed.



# Improvement

## What

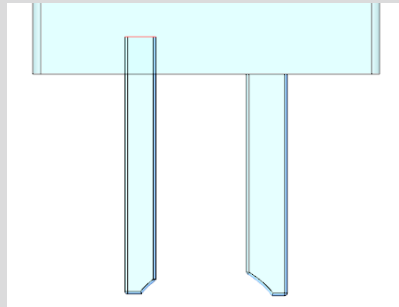
- Use Flexible Modeling 'Substitute' in 'ATTACH' instead of replace
- <https://redmine.buw-soft.de/issues/8703>

## Why

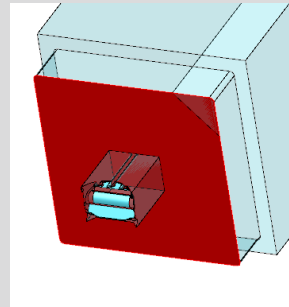
- Normal offset-replace (modeling tab) does sometimes **NOT** unite electrode contour and electrode base, no matter whether FREE\_FACE or solid surface is selected as reference.

## How

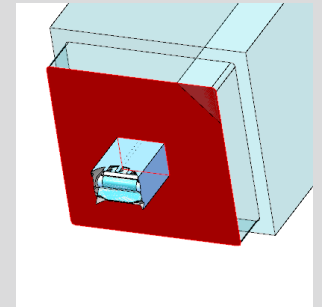
- SMARTElectrode automatically uses feature substitute in group 'ATTACH' instead of offset/replace if license for Flexible Modeling Extension is available



Result for expand



Result for replace



Result for FMX substitute

# Improvement

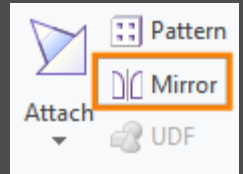
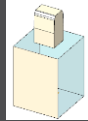
## What

- Handle existing base for commands 'Pattern' and 'Mirror' in design mode
- <https://redmine.buw-soft.de/issues/8495>



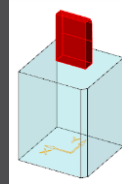
## Why

- Mirror of complete electrode including base may remove chamfers

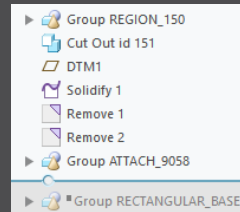


## How

- Command 'Pattern' automatically collects all solid surfaces or surfaces below FREE\_FACE



- Command 'Mirror' automatically activates insert mode and adds mirror feature in front of base



# Improvement

## What

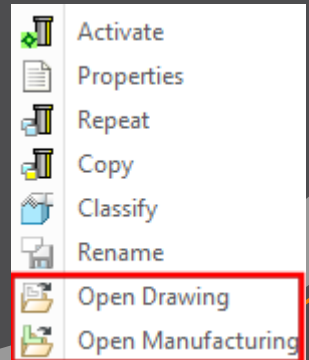
- New commands 'Open Drawing' and 'Open Manufacturing' added to context menu in modeltree and object window
- <https://redmine.buw-soft.de/issues/10411>

## Why

- Easier navigation in electrode assembly

## How

- Commands are only accessible when assembly is active
- Commands are accessible for selected electrode in modeltree and graphics window
- Drawing and manufacturing will be opened in a new window
- If electrode is part of assembly drawing then correct sheet will be shown

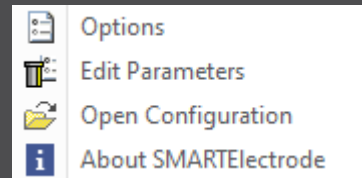




# Improvement

## What

- Introduced new command 'Open Configuration'
- <https://redmine.buw-soft.de/issues/10739>

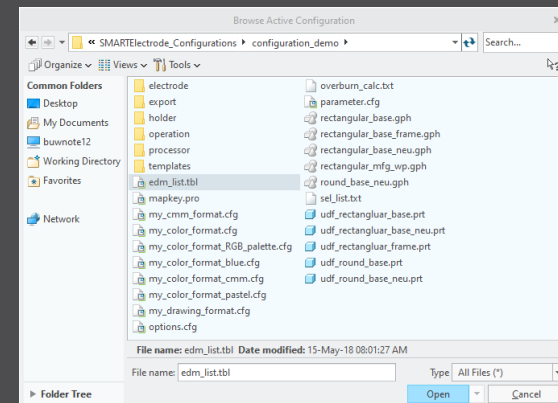


## Why

- Easier access to active configuration

## How

- A file browser opens in active configuration folder
- Actions for selected files / file types
  - parameter.cfg  
Dialog for modification will be opened
  - options.cfg  
Dialog for modification will be opened
  - \*.prt, \*.asm, \*.drw  
Creo file will be opened in a new window
  - any other file  
File will be opened in info window



# Improvement

## What

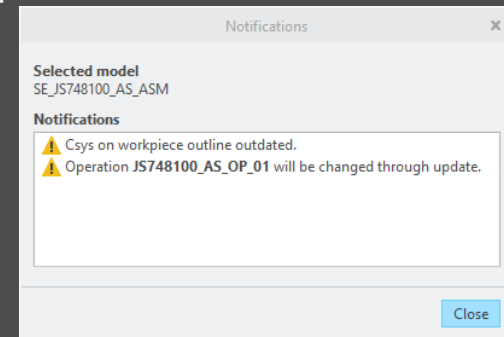
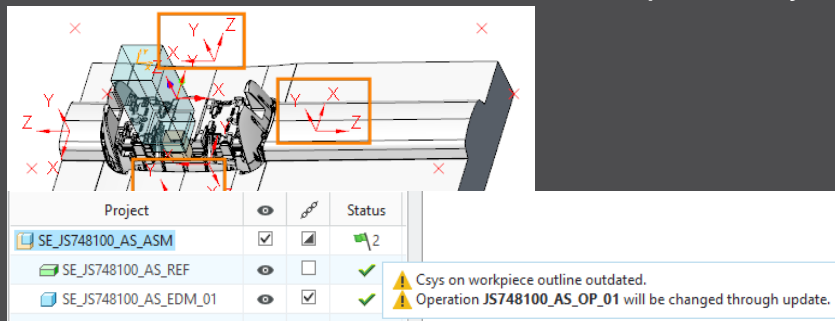
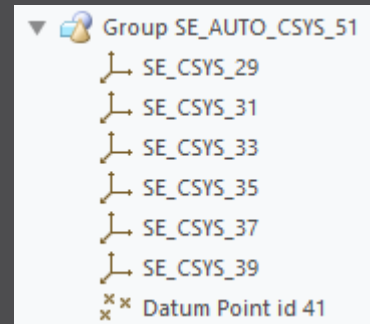
- Disable automatic update of csys on workpiece sides
- <https://redmine.buw-soft.de/issues/10511>

## Why

- User should be in control when dependent operations and electrodes are updated

## How

- The 8 datum points represent the corners of the workpiece outline and can be used for drawing dimensions. These will be updated automatically!
- A notification will be shown in Burnsheat UI for outdated csys
- Double-click in notification details to update csys, operation and electrodes



# Improvement

## What

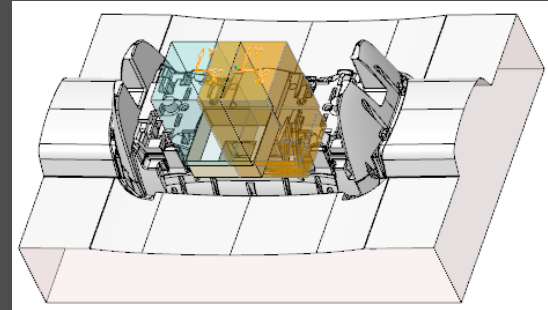
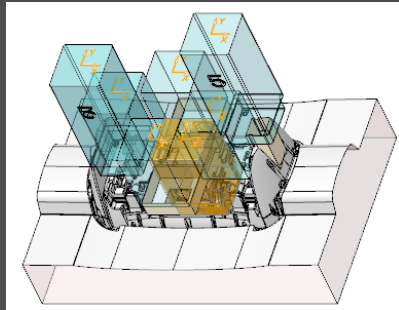
- Repeat UI: only show selected electrodes and preview components when defining new position.
- <https://redmine.buw-soft.de/issues/10399>

## Why

- Improve overview for users if there are many electrodes assembled

## How

- Pre-select electrodes before Assemble Again UI is opened
- Or select in UI (don't forget to confirm selection)
- All electrodes are displayed again on OK or when user starts selection again



# Improvement

## What

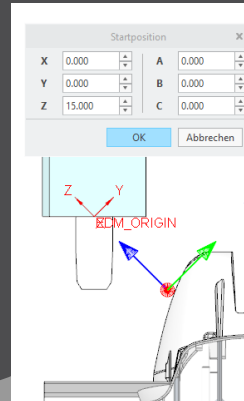
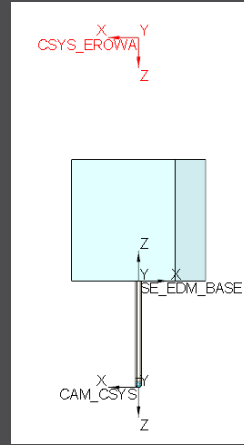
- Use default csys from base to calculate angles
- <https://redmine.buw-soft.de/issues/10822>

## Why

- In some cases, it may be necessary to rotate csys with EDM\_ORIGIN\_NAME
- Angles in burnsheet would appear with wrong values
- Use csys showing orientation of blank for calculation of angles
- Always use 'EDM\_ORIGIN' for electrodes designed in SMARTElectrode 7.0

## How

- Use csys 'SE\_EDM\_BASE' or csys defined in option 'EDM\_ORIGIN\_NAME' for electrodes designed in SMARTElectrode 8.0 – 13.0
- This allows adjustment of csys 'EDM\_ORIGIN\_NAME' for easier definition of start position



# Improvement

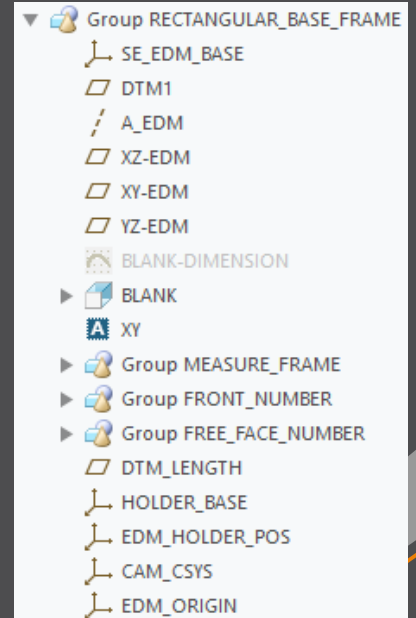
## What

- Allow subgroups in definition of user-defined features for electrode base.
- <https://redmine.buw-soft.de/issues/10389>

## Why

- Sometimes features are nested in groups (MEASURE\_FRAME, FRONT\_NUMBER, FREE\_FACE\_NUMBER) in Base UDF
- These features are currently not considered as part of the base leading to wrong size calculation
- SMARTElectrode now checks all features in base group when checking if a feature/surface is part of base or not.

## How



# Improvement

## What

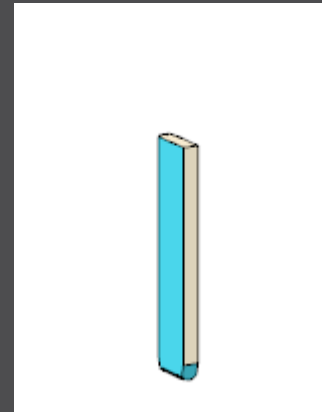
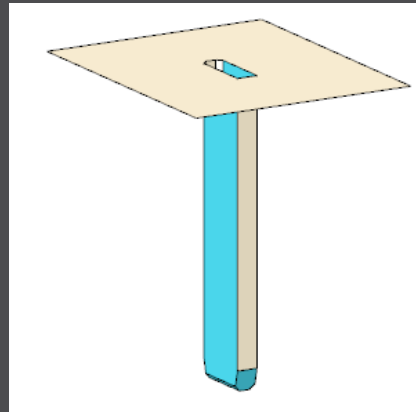
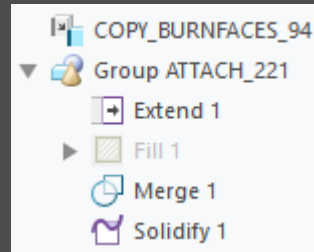
- Check if feature merge in group 'Attach' creates a closed quilt if performed on surface feature or quilt

## Why

- Sometimes merge sets wrong side for 2<sup>nd</sup> quilt to keep
- Leads to an opened quilt which can't be solidified

## How

- SMARTElectrode checks if merge leads to a closed quilt
- SMARTElectrode changes side to keep in merge feature if necessary



# Fixed Error

## What

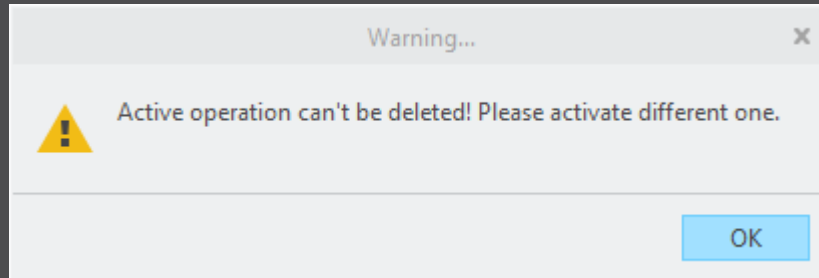
- Prevent deletion of active operation
- <https://redmine.buw-soft.de/issues/10733>

## Why

- SMARTElectrode ribbon is disabled after deletion of active operation
- Most of the commands are still accessible but won't work anymore

## Resolution

- SMARTElectrode checks features whether they belong to active operation before deletion
- Deletion will be canceled with message window if feature of active operation selected



# Fixed Error

## What

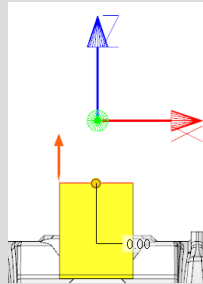
- Electrode base with user-defined FREE\_FACE is suppressed to make design changes
- Base is reset to default position when resumed in Base UI

## Why

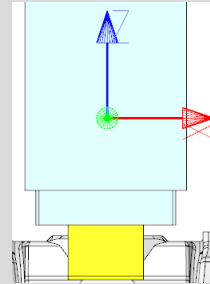
- Information about user-defined FREE\_FACE gets lost
- SMARTElectrode carries out default process to update base

## Resolution

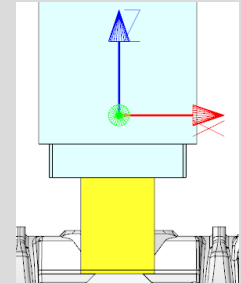
- SMARTElectrode checks reference of datum FREE\_FACE for changes
- Recognition works for all models with user-defined FREE\_FACE



Selected user-defined  
FREE\_FACE



Error on resume in Base  
UI



Fix: position is retained



# Fixed Error

## What

- Workpiece dimensions on drawing sometimes incomplete
- <https://redmine.buw-soft.de/issues/10990>

## Why

- Orientations are sometimes not correctly set after drawing creation from template
- For these drawing views sorting of outline points might fail

## How

- Supported symbolic names for drawing orientations
  - 2d view names: SE\_TOP (SE\_DEFAULT), SE\_BOTTOM, SE\_FRONT, SE\_BACK, SE\_LEFT, SE\_RIGHT
  - 3d view names: SE\_DEFAULT\_ISO, SE\_ASM\_DEFAULT, SE\_ASM\_ISO
- Please refer to 'Getting started' document in installation for more information

# Fixed Error

## What

- Fixed wrong creation of ordinate dimensions on drawings
- <https://redmine.buw-soft.de/issues/10685>

## Why

- Multiple redundant baselines without merging dimensions have been created

## How

- This issue is fixed

# Fixed Error

## What

- Reset surface appearance to default before touching faces are colored
- <https://redmine.buw-soft.de/issues/10405>

## Why

- Reset of surface colors is not applicable in all cases

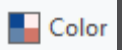
## How

- COLOR\_EDM\_TOUCHING\_FACES has to be available in my\_color\_format.cfg
- A warning will be displayed if 'COLOR\_EDM\_TOUCHING\_FACES' is not is not applicable
- A distinction is made between the following cases:
  - Check UI: coloring can be done when all electrode positions are selected for touching surface analysis
  - Check UI: a warning will be displayed and coloring will be canceled if NOT all electrode positions are selected for touching surface analysis
  - Base UI: coloring can be done in detailed calculation of contact area if active electrode is used only once in assembly
  - Base UI: a warning will be displayed and coloring will be canceled if active electrode is used multiple times in assembly

# Fixed Error

What

- Fixed wrong result for selection by color
- <https://redmine.buw-soft.de/issues/10857>

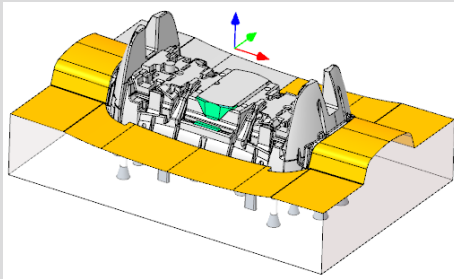


Why

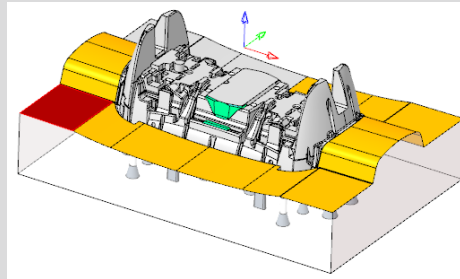
- Sometimes too many surfaces have been selected

Resolution

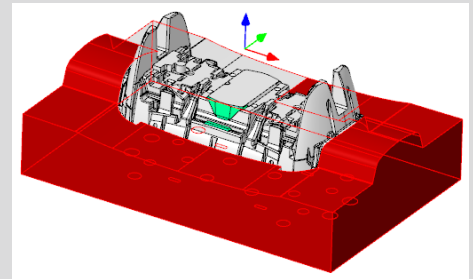
- This issue is fixed



Original



Selected reference



Wrong result

# Fixed Error

## What

- Hide invalid commands in modeltree
- <https://redmine.buw-soft.de/issues/10985>

## Why

- Some commands are invalid in modeltree context menu if selected feature is not inside active component

## How

- This issue is fixed

# Fixed Error

## What

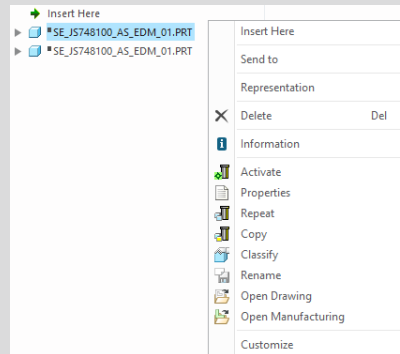
- Commands can be selected from context menu for suppressed electrodes
- Applies to Creo Parametric 4.0 and 5.0
- <https://redmine.buw-soft.de/issues/10518>

## Why

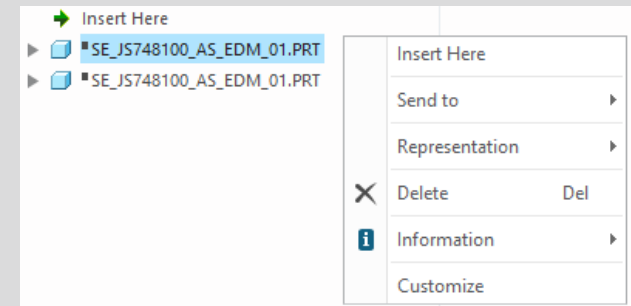
- Component selections are not automatically skipped in above Creo versions

## Resolution

- Issue is fixed
- Commands are removed for suppressed features



Before



After

# Fixed Error

## What

- Crash in Base UI if no workpiece model found
- <https://redmine.buw-soft.de/issues/10488>

## Why

- It's not possible to read workpiece information if no component in assembly is marked as workpiece
- Parameter `SE_CORE_MODEL=1` not available

## Resolution

- Issue is fixed
- Always check if an active workpiece can be found and cancel functionality if necessary

# Fixed Error

## What

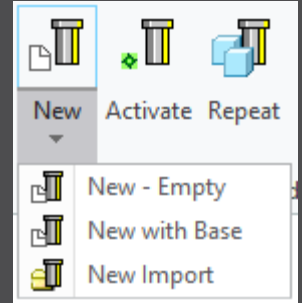
- Command 'New with Base' does not work anymore
- <https://redmine.buw-soft.de/issues/10407>

## Why

- SMARTElectrode checks selected template for completeness before its used
- This includes check for parameters
  - SE\_EDM\_SUPPLIER
  - SE\_EDM\_TYPE
- Command is canceled if any expected parameter is missing

## Resolution

- Issued is fixed
- SMARTElectrode extracts supplier and type from selected data file:  
configuration/electrode/<supplier>/<type>.dat





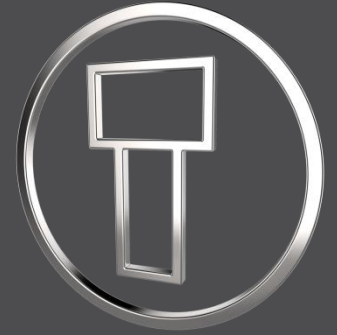
# Fixed Error

## What

- Help does not open if path contains spaces or special characters.

## Resolution

- Issue is fixed.



# SMARTElectrode 13.0.0.0

*What's New*



# Multibody support

## What

- Support for new multibody features introduced in Creo Parametric 7.0 [<https://redmine.buw-soft.de/issues/9973>]

## Who needs it

- All customers working with Creo Parametric 7.0

## Details/Usage

SMARTElectrode supports multibody features in following modes/models/features:

- Assembly creation for all available methods (original model, merge, copy-geom, inheritance)
- Electrode design
  - Features creating a solid are automatically created in default body or body selected implicitly by references
  - Features without geometrical references like base or support are created in active or default body

## Impact/ Compatibility

- Additional features may be added with new releases from PTC

# Improvement

## What

- Added threshold to show a warning if contact area covers more than defined percentage of blank area  
[\[https://redmine.buw-soft.de/issues/10357\]](https://redmine.buw-soft.de/issues/10357)

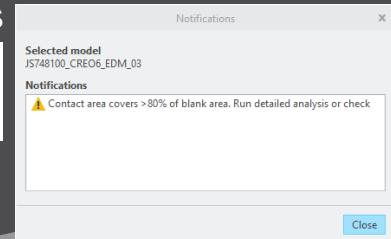
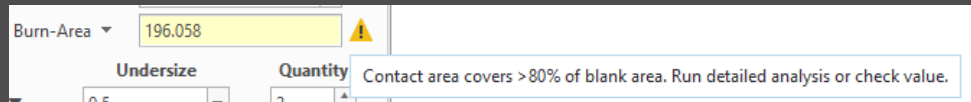
## Who needs it

- Users who output effective contact area for EDM programming

## Details/Usage

- SE performs a fast contact area calculation when Base UI is opened and contact area is 0
- Slower more exact calculation can be started by user in UI
- Check UI always performs the exact calculation
- Option “CONTACT\_AREA\_MAX\_COVERAGE” defines valid percentage
- Warnings are shown in Base UI and Burnsheat notifications

|                           |    |   |
|---------------------------|----|---|
| CONTACT_AREA_MAX_COVERAGE | 80 | Maximum valid coverage of the blank area with contact areas in percent. |
|---------------------------|----|---|



# Fixed error

## Description

- Edited base values are reset on next change  
[<https://redmine.buw-soft.de/issues/10218>]

|        |        |    |    |        |    |
|--------|--------|----|----|--------|----|
| A_BASE | 17.500 | ▲▼ | D1 | 5.128  | ▲▼ |
| B_BASE | 15.000 | ▲▼ | D2 | 40.000 | ▲▼ |
| LENGTH | 48.000 | ▲▼ | D3 | 0.022  | ▲▼ |

|        |        |    |    |        |    |
|--------|--------|----|----|--------|----|
| A_BASE | 15.000 | ▲▼ | D1 | 5.128  | ▲▼ |
| B_BASE | 15.000 | ▲▼ | D2 | 35.000 | ▲▼ |
| LENGTH | 43.000 | ▲▼ | D3 | 0.022  | ▲▼ |

## Cause

- Edited values are not correctly saved to template data

## Solution

- Problem is fixed

# Fixed error

## Description

- Some electrodes are not processed during output [<https://redmine.buw-soft.de/issues/10191>]

## Cause

- SE validates every electrode during export and skips suppressed, disabled or incomplete components.
- Check for completeness includes a check of electrode base group
- Check for completeness fails on imported or legacy electrodes as base is not created by UDF.

## Solution

- SE now looks for existence of mandatory EDM coordinate system
- Legacy electrode use “EDM\_ORIGIN” or “EDM\_ORIGIN\_TOP” depending on option value “USE\_POS\_CSYS\_TOP”
- Electrodes beginning with version 8.0 use csys name defined in option “EDM\_ORIGIN\_NAME”