

Quick Start Guide

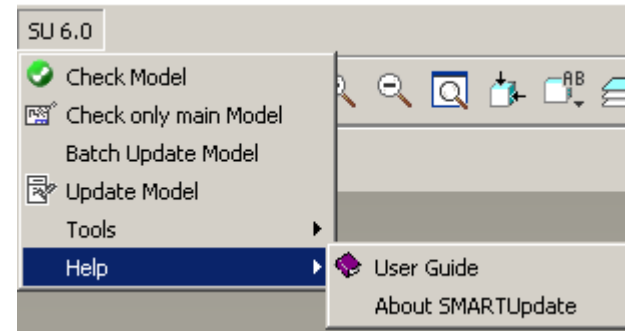
SMARTUpdate 6.0

What is SMARTUpdate

- The SMARTUpdate Software is a tool similar to ModelCHECK from PTC which contains more comprehensive update functionality
- Another advantage of this tool is the ease of use compared to ModelCHECK
- The Tool can check and update the Pro/E models in 2 ways:
 - Interactively – the current loaded model (prt, asm, drw) will be checked and the check results are shown in a user friendly interface. Then it can be updated by a button push
 - Automatically – the models in a local/workspace folder will be checked and updated automatically in batch mode without showing the user interface.

The Menu 1/2

- The SMARTUpdate Menu contains following commands:
 - Check Model
 - Check only main model
 - Batch Update Model
 - Update Model
 - Tools
 - Help
 - Output Orientations Matrix
 - Help
 - User guide
 - About SMARTUpdate



The Menu 2/2

- The functionality of the menu commands:

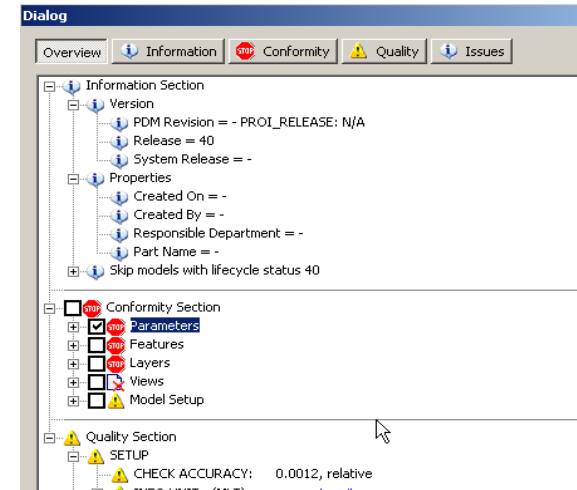
Command	Functionality
Check Model	Checks the current loaded model (drw, asm, prt) and the whole structure of subcomponents (for drw and asm) and shows the check report
Check only main model	Checks only the current loaded model (drw, asm, prt) without the structure of subcomponents and shows the check report
Batch Update Model	Updates models from a specific local/workspace folder in batch mode
Update Model	Directly updates current model without showing the check report
Tools Output Orientations Matrix	Admin-Command: Outputs a the matrix for each saved orientation in a file
Help User guide About SMARTUpdate	The User online help and informations about the current version

How to use SMARTUpdate

- There are three ways how to use SMARTUpdate:
 - **Interactive Mode** – most comprehensive check and update method: automatic and interactive update possible, display results in graphical user interface, mapkeys will run but slower
 - Menu command: Check Model
 - **Direct Mode** – only automatic check and update of current model mapkeys will not run but faster
 - Menu command: Update Model
 - **Batch Mode** – Check and Update will be run automatically on all models in a local, network or workspace folder. Mapkeys will not run, fastest and most efficient update method
 - Menu command: Batch Update Model

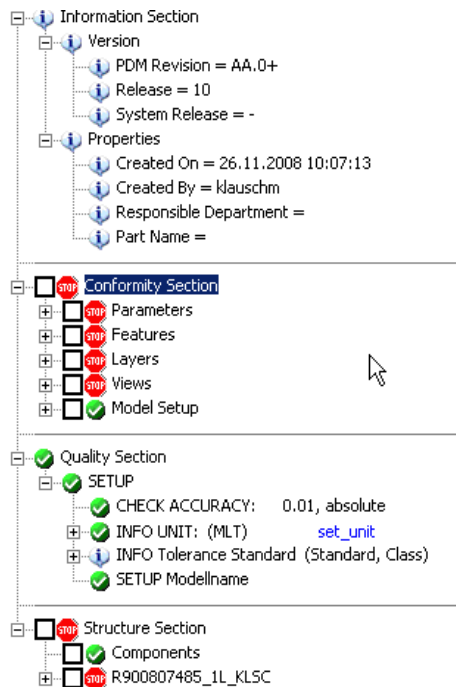
Interactive mode – Result window 1/3

- The Usage of SMARTUpdate in Interactive mode benefits of the graphical display of the check results:
- Result window gathers all checks and their informations in one place
- Displayed information
 - ✔ Green: everything is fine
 - ⚠ Yellow: check present but incomplete
 - 🛑 Red: check is completely missing
 - 🗑️ Remove: Check will be removed
 - ⊗ Grey: Check not run, or disabled (by condition)
 - ℹ Blue: Check has only information purpose
- All information is organized by section for the whole assembly structure
 - Information – mostly parameter queries with model info
 - Conformity – parameters, layers, features, etc. - automatic update
 - Quality – various checks: Model name, Material, etc. - interactive update
 - Structure – the check information for the whole assembly structure

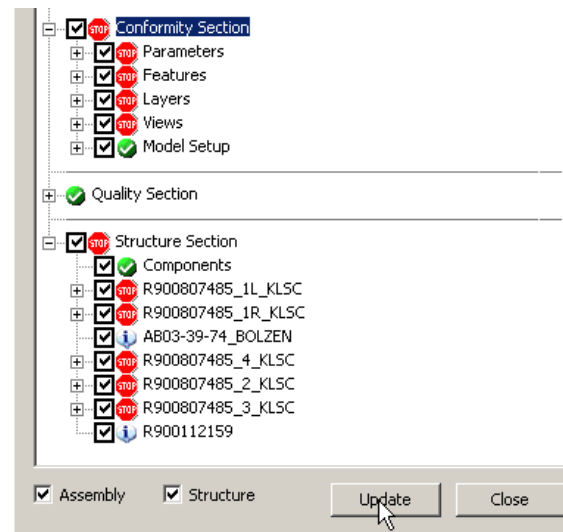


Interactive mode – Result window 2/3

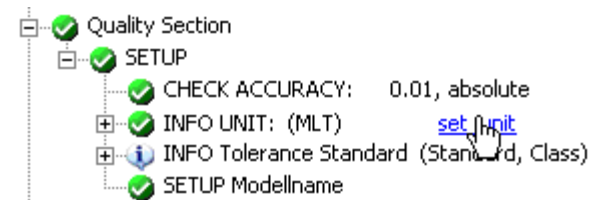
- The result window permits:
 - the visualisation of the check information
 - Automatically update the checked properties from conformity section
 - Interactively update the checked properties in quality section



Visualisation



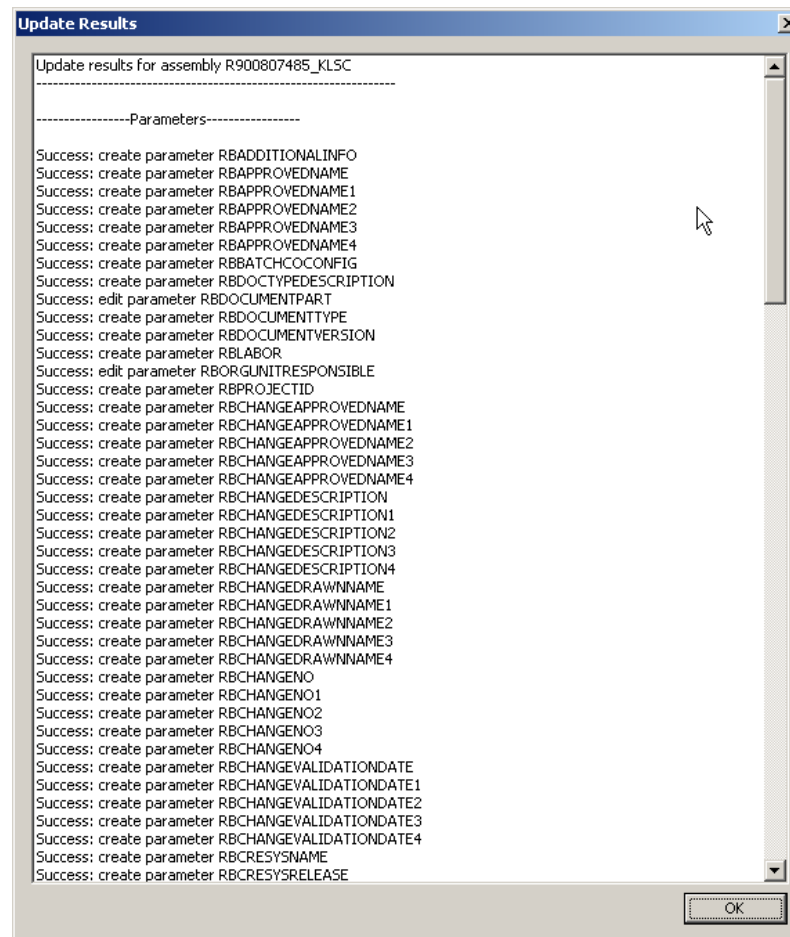
Automatic Update



Interactive Update

Interactive mode – Update report window 3/3

- After the update run the update report window will be displayed.
- The information in the report window is also saved in the working directory in the file update.log

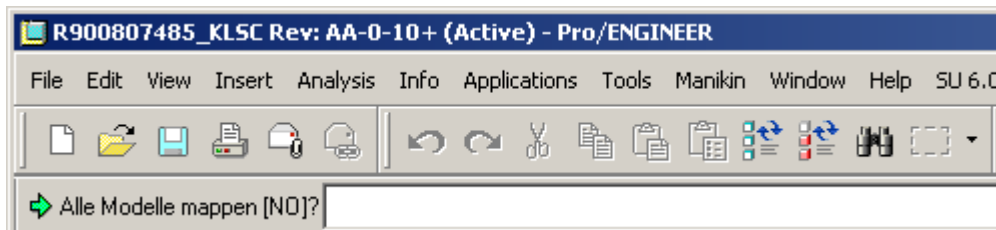


```

Update Results
Update results for assembly R900807485_KL5C
-----Parameters-----
Success: create parameter RBADDITIONALINFO
Success: create parameter RBAPPROVEDNAME
Success: create parameter RBAPPROVEDNAME1
Success: create parameter RBAPPROVEDNAME2
Success: create parameter RBAPPROVEDNAME3
Success: create parameter RBAPPROVEDNAME4
Success: create parameter RBBATCHCOCONFIG
Success: create parameter RBDCTYPEDESCRIPTION
Success: edit parameter RBDOCUMENTPART
Success: create parameter RBDOCUMENTTYPE
Success: create parameter RBDOCUMENTVERSION
Success: create parameter RBLABOR
Success: edit parameter RBORGUNITRESPONSIBLE
Success: create parameter RBPROJECTID
Success: create parameter RBCHANGEAPPROVEDNAME
Success: create parameter RBCHANGEAPPROVEDNAME1
Success: create parameter RBCHANGEAPPROVEDNAME2
Success: create parameter RBCHANGEAPPROVEDNAME3
Success: create parameter RBCHANGEAPPROVEDNAME4
Success: create parameter RBCHANGEDESCRIPTION
Success: create parameter RBCHANGEDESCRIPTION1
Success: create parameter RBCHANGEDESCRIPTION2
Success: create parameter RBCHANGEDESCRIPTION3
Success: create parameter RBCHANGEDESCRIPTION4
Success: create parameter RBCHANGEDRAWNNAME
Success: create parameter RBCHANGEDRAWNNAME1
Success: create parameter RBCHANGEDRAWNNAME2
Success: create parameter RBCHANGEDRAWNNAME3
Success: create parameter RBCHANGEDRAWNNAME4
Success: create parameter RBCHANGENO
Success: create parameter RBCHANGENO1
Success: create parameter RBCHANGENO2
Success: create parameter RBCHANGENO3
Success: create parameter RBCHANGENO4
Success: create parameter RBCHANGEVALIDATIONDATE
Success: create parameter RBCHANGEVALIDATIONDATE1
Success: create parameter RBCHANGEVALIDATIONDATE2
Success: create parameter RBCHANGEVALIDATIONDATE3
Success: create parameter RBCHANGEVALIDATIONDATE4
Success: create parameter RBCRESYSNAME
Success: create parameter RBCRESYSRELEASE
    
```


Direct mode

- Update in direct mode works for the current loaded modell and doesn't show the result window
- All checks (red, yellow, remove) will be selected and updated automatically
- Interactive update (in quality section is not possible)
- Mapkeys run is not possible
- Users have the option to update the whole assembly structure or only the main assembly



Batch mode

- Update in Batch mode works like the direct mode, but on all models in a network/local/workspace folder including subdirectories
- The Batch mode works only on the single models, doesn't load the whole assembly structure
- You can filter the models list by using wildcards or RegExp
- Select specific models or all and update them with a button click
- Update results will be saved in the working directory in the same file update.log

