

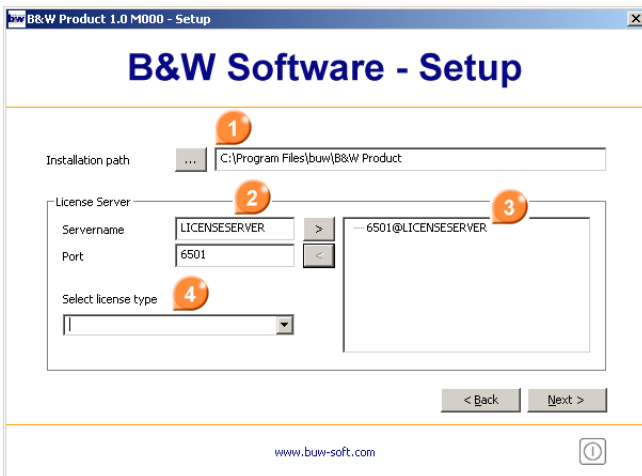
B&W Application Installation

To install or update this B&W Application for Creo Elements/Pro, complete the following steps:

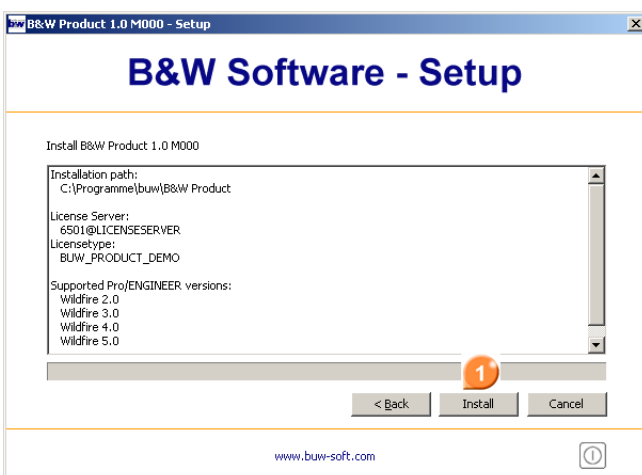
New Installation – Standard License



- ➔ Download CD-Image (self-extracting archive) or load B&W CD-ROM
- ➔ Extract files or browse CD-ROM
- ➔ Double-click **setup.exe** to start installation
- ➔ Select **License-server** to install B&W flexlm license server and select license. License server installation is not need if you want to work with a B&W demo code
- ➔ Select **Software installation** to install the B&W Application.

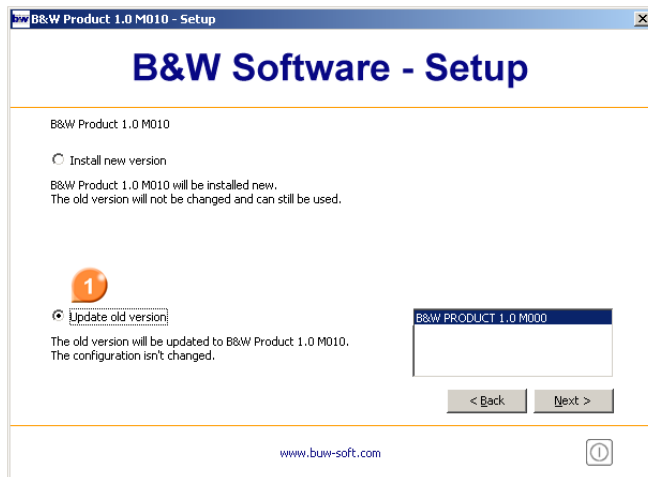


- ➔ Accept product license agreement and forward to select installation path, components to be installed and licensing options and press **Next**.



- ➔ Check installation summary and press **Install** to install B&W product.
- ➔ Adapted **config.pro** and **config.win** can be found in **<installdir>\bin\<proe-version>**
- ➔ Copy these files to your working directory to start this application automatically when starting Creo Elements/Pro. Be careful not to overwrite any existing configuration files that you want to keep. You may want to append your custom config.pro file information to the application specific config.pro files. You will have to recreate your config.win settings using the application specific toolbars from the config.win

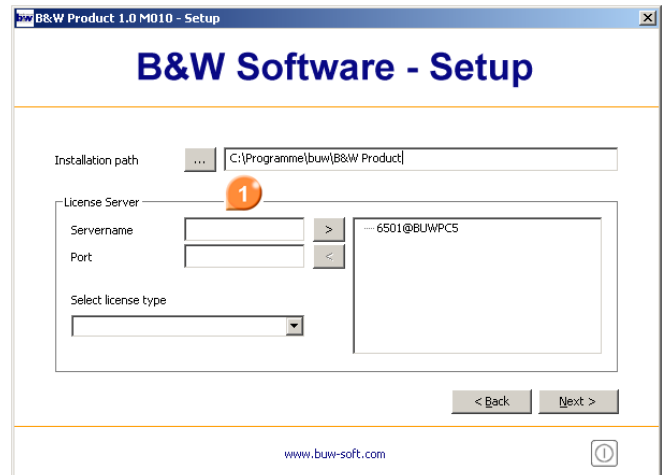
Update Installation - Patch



- ➔ Download CD-Image (self-extracting archive) or load B&W CD-ROM
- ➔ Extract files or browse CD-ROM
- ➔ Double-click **setup.exe** to start installation
- ➔ Select **Install Software** to run update
- ➔ Select **Install new version** to install software to a new directory or
- ➔ select **Update old version** to update and keep your settings/configuration.
- ➔ check licensing options and summary and press **Install** or **Update** to start.

New Installation - Demo

- ➔ Download CD-Image (self-extracting archive) or load B&W CD-ROM
- ➔ Extract files or browse CD-ROM
- ➔ Double-click **setup.exe** to start installation
- ➔ Follow steps in **New Installation** and skip licensing options.
- ➔ Press **Next** and start installation. Setup automatically activates demo mode.
- ➔ Save demo license to subdirectory **text** inside products installation path.
- ➔ Adapted **config.pro** and **config.win** can be found in **<installdir>\bin\<proe-version>**



- ➔ **Supported Operating Systems:**
XP, XP64, Vista, Vista64, Windows 7, Windows 7 64
- ➔ **Supported Versions:**
Pro/ENGINEER Wildfire 2, Wildfire 3, Wildfire 4, Wildfire 5, Creo Elements/Pro 5
- ➔ **Supported Languages:**
SMARTElectrode supports English and German
- ➔ **Trademark Acknowledgments:**
Registered Trademarks of Parametric Technology Corporation or a Subsidiary: Parametric Technology Corporation, Pro/ENGINEER, Wildfire, Creo Elements/Pro and Trademarks of Parametric Technology. Third-Party Trademarks: FLEXIm is a registered trademark of Macrovision Corporation. Windows and Windows NT are registered trademarks of Microsoft Corporation. All other brand or product names are trademarks or registered trademarks of their respective holders.

Copyright © 2011 B&W Software for efficient product design

b&w software GmbH
solutions for efficient product design
Weisse-Herz-Str. 2a
D-91054 Erlangen

fon +49 (0)9131 53387-00
fax +49 (0)9131 53387-20
web www.buw-soft.de
mail info@buw-soft.de

