



SMARTUpdate

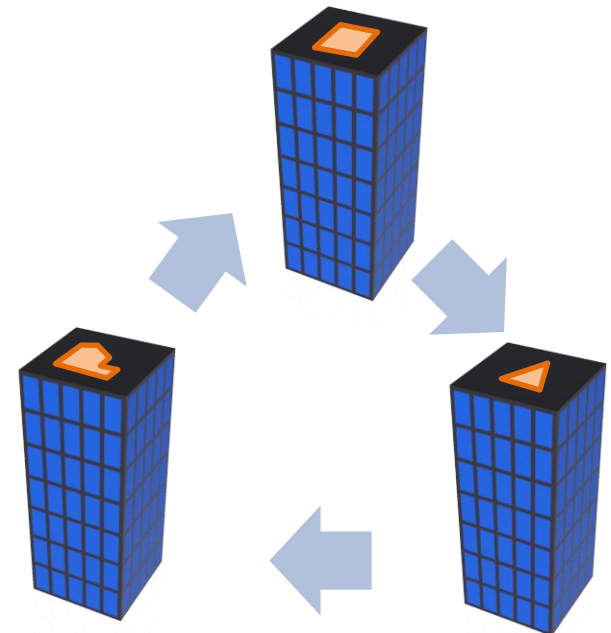
**Improve quality and
harmonize your CAD data
automatically**

- **Introduction**
- **Use cases**
- **How can SmartUpdate help?**
- **Benefits**
- **SmartUpdate workflow and capabilities**

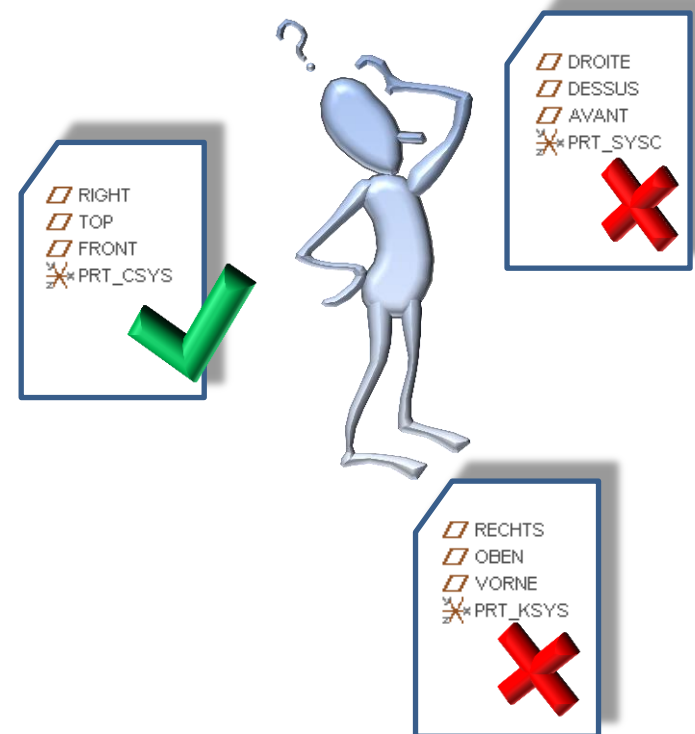
- **What is SmartUpdate all about?**
- **Where does it come from and why was it initially developed?**

Use case: Internal Data reuse and Data sharing

- You want to use parts from existing projects
- You want to incorporate data from other company sites in your design
 - Start features don't match
 - Parameters are missing
 - Layer system conflicts
 - Views are oriented incorrectly
 - Relations need to be cleaned up
 -

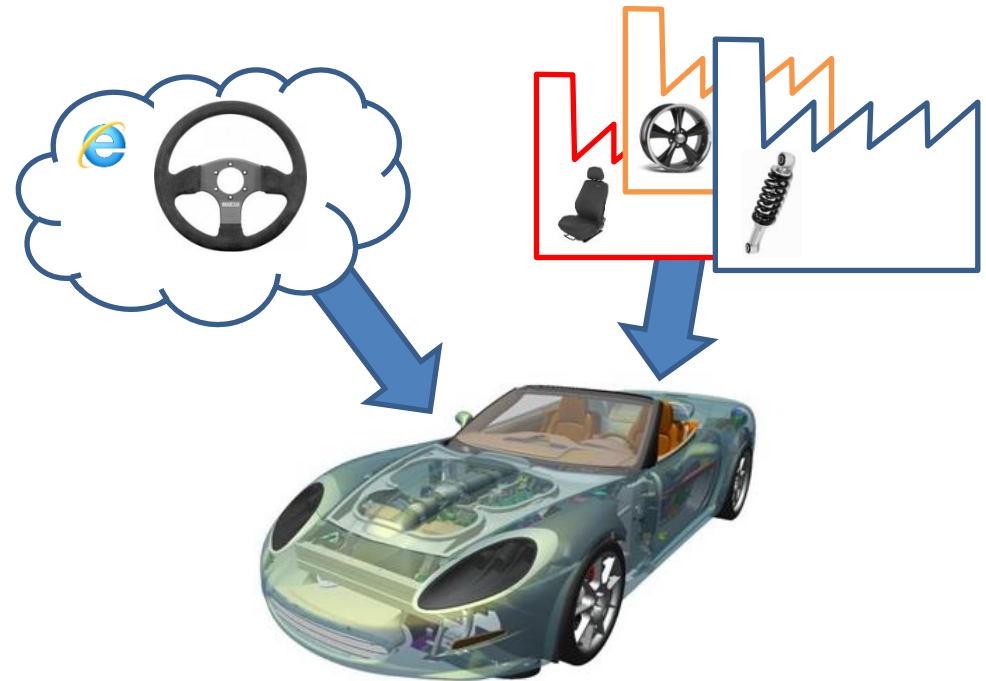


- **You want to harmonize your existing CAD data**
 - Each company site used/uses own startparts
 - There were historical changes to the startparts
 - There are no or unclear design rules
 - Design rules are not verified



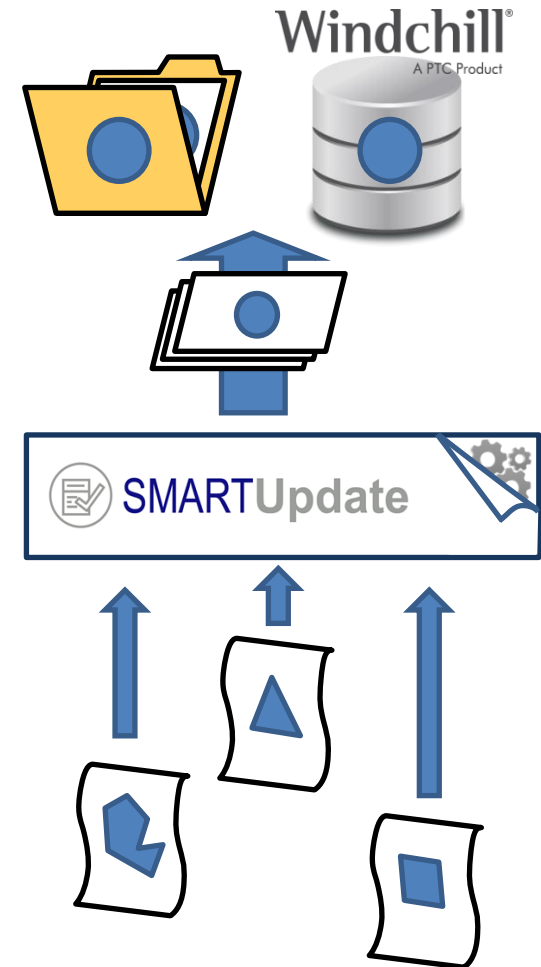
Use case: Data import from external sources

- **You are using imported objects in your design**
 - Parts contain only the geometry as import feature; datum features (planes, axes, csys) are missing or do not match with your company standard
 - Parameters, Layers, Orientations, etc. are missing

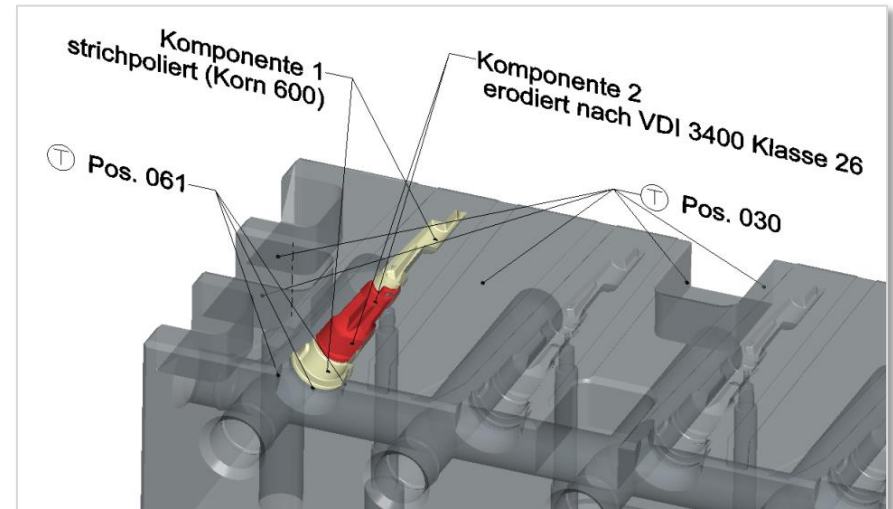


Use case: PDM Link introduction

- **You want to implement PDM-Link at your site**
- **You want to keep your Commonsense clean and tidy**
 - Parameters are not designated or not existing
 - The design rules have not been followed
 -



- **You want to start with MBD**
 - Existing parts do not have combined states
 - The Layer system is not supporting MBD
 - Required Orientations are missing
 - Part setup files are not correctly set
 -



Use case: Startpart Management

- **You want to provide multiple tailored and sophisticated startparts to your user base**
 - This takes a lot of time to create and maintain
 - Updating startparts becomes a nightmare

How can SmartUpdate help you?

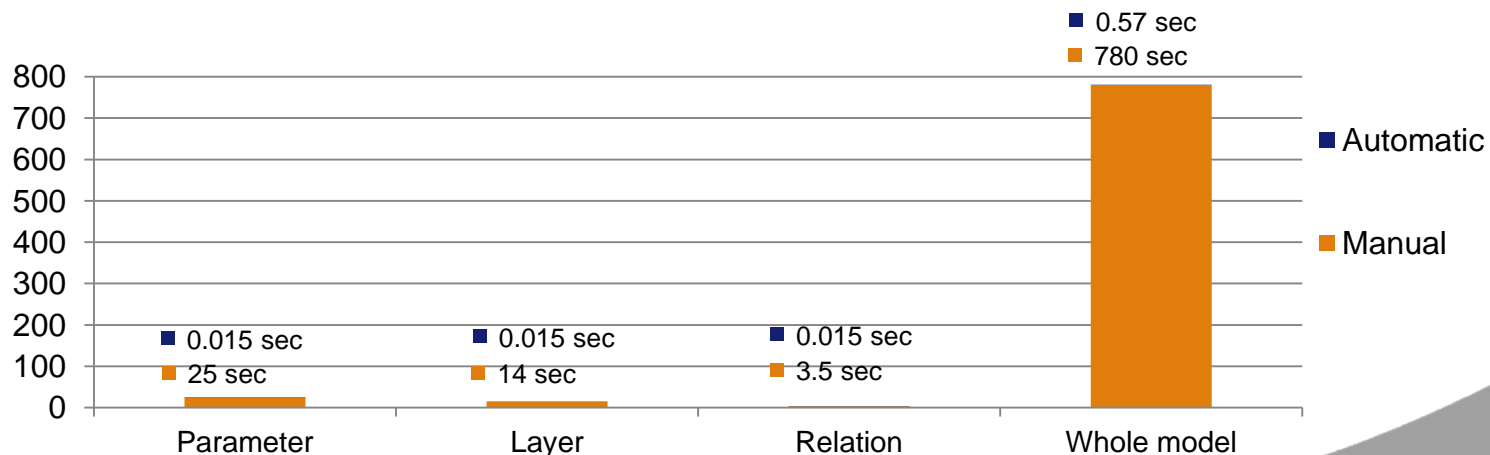
- **It will save you a lot of time by automating many of these use cases**
- **It'll help you to apply design rules and verify them**
- **It helps the user to check and update his design before checking data into Windchill**
- **You may update recursively through the whole assembly structure**
- **It helps you and users to avoid errors during updating and harmonization**
- **Use batch mode for large data sets harmonization**
- **... and many more**

Manual update

- **Create/Edit a single**
 - Parameter ~ 25 sec
 - Layer ~ 14 sec
 - Relation ~ 17 sec
- **Create/Edit 20 parameters, 15 layers and 3 relations**
 - 1 model ~ 13 min
 - 100 models ~ 21 hours
 - 1000 models ~ 26 days

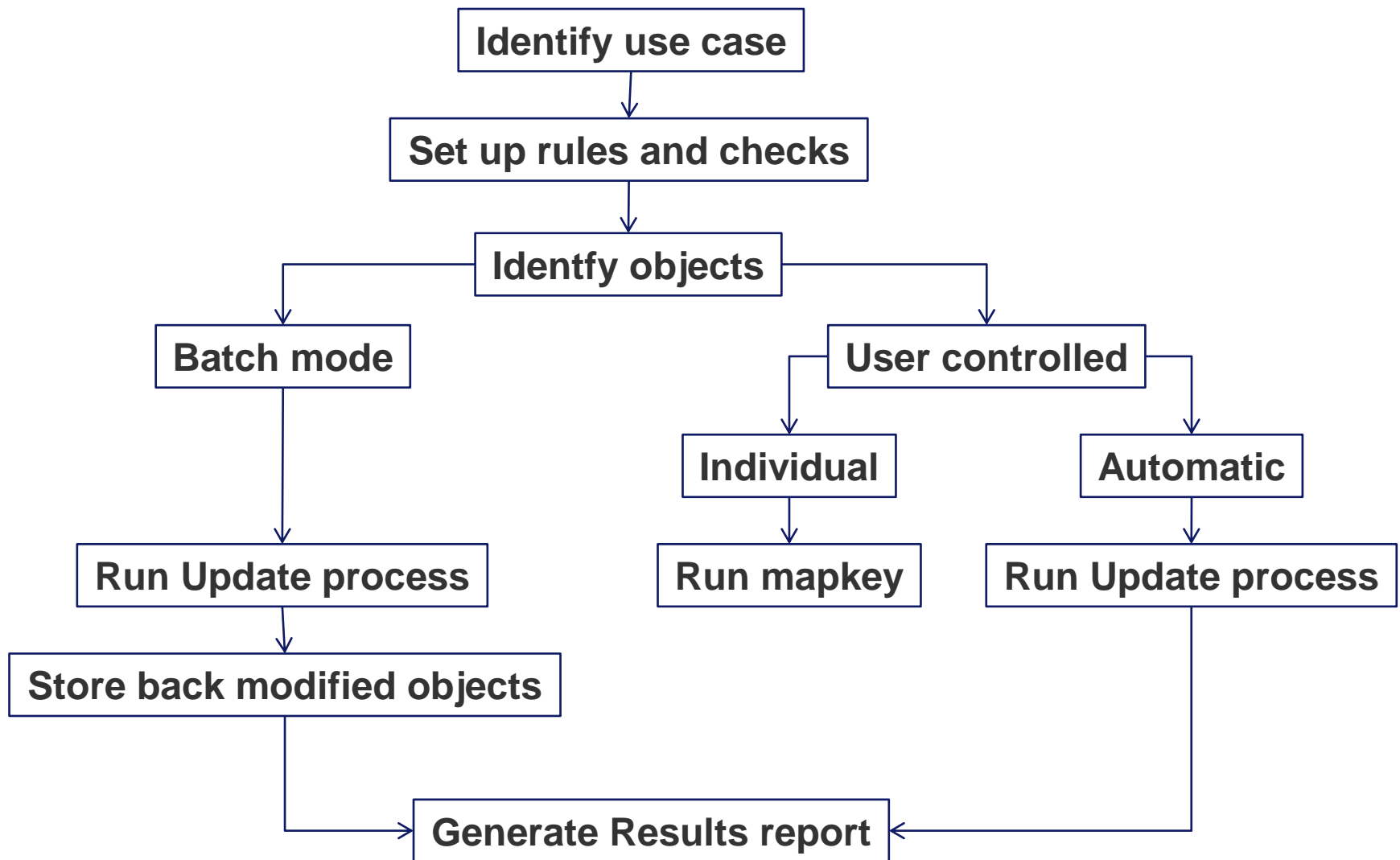
B&W SmartUpdate

- **Create/Edit a single**
 - Parameter ~ 0.015 sec
 - Layer ~ 0.015 sec
 - Relation ~ 0.015 sec
- **Create/Edit 20 parameters, 15 layers and 3 relations**
 - 1 model ~ 0.57 sec
 - 100 models ~ 57 sec
 - 1000 models ~ 9.5 min



- **Check for required model properties (Parameters, Layers, Views, Relations, etc.) and if necessary create/correct them**
- **Translate parameters, relations or drawing notes from dictionary**
- **Use it recursively for the whole assembly structure**
- **Use batch mode for a local folder or workspace**
- **Use it on drawings to update the .dtl file**
- **Run a ModelCHECK analysis on your model**
- **Run a mapkey during a specific check**
- **Condition the check or update for specific objects**
- **.....many, many more**

SmartUpdate Workflow



Configurator UI

SMARTUpdate Configurator: C:\proe\creo_appl\SU60_M050\configuration_customer1\domain

Check Domain/Category

- R&D
 - Part Mode
 - Plastic Part
 - Basisteil
 - Normteil
 - Assembly Mode
 - Drawing Mode

RD

Domain Name	R&D
Domain Initial	RD
Current Mode	Part Mode
Current Section	Conformity Section
Expand Model tree	<input checked="" type="checkbox"/>
Propagate Status to next level	<input checked="" type="checkbox"/>

Check Details

- Information Section
 - Meta Data
 - Mass Properties
 - Info Check 2
- Conformity Section
 - Relations
 - Create BUW Relation
 - Edit BUW Relation
 - Delete BUW Relation
 - Delete Comment
 - Parameters
 - Create BUW Parameter
 - Edit BUW Parameter
 - Remove BUW Parameter
 - Remove BUW_STAR*
 - Startpart Features
 - Rename old Right Feature to Right
 - Create STD-KOORD
 - Create FT_MASS_PROPS
 - Edit A H

Edit BUW Parameter

<input checked="" type="checkbox"/> Organisation	
Check ID	RD_PRT_C_EDIT_BUW_PARAM
Condition Check	<input type="checkbox"/>
Conditions	-
Condition the update	<input type="checkbox"/>
Condition the check	<input type="checkbox"/>
Categories	ALL
<input checked="" type="checkbox"/> Type	
Check Type	Parameter
Description	Edit BUW Parameter
<input checked="" type="checkbox"/> Definition	
Parameter	BUW_EDIT_PARAMETER
Action	EDIT
New Name	BUW_EDITED_PARAMETER
Value	2

SMARTUpdate: C:\proe\creo_app1\SU60_M050\configuration_customer1

Overview Information **STOP** Conformity **STOP** Quality **STOP** Issues Check Model

- Information Section
 - Meta Data
 - Mass Properties
 - Volume: 77.2394 mm³
 - Mass: 0.108135 g (Material: ULTRAFORM H2320)
 - Model Size: 18.5649x6.0999x4.5000 mm
 - Info Check 2
- Conformity Section
 - Relations
 - (Volume)(*) (EDIT) **STOP**
 - BUW_EDIT_REL = 3 (EDIT) **STOP**
 - Parameters
 - BUW_CREATE_PARAMETER: 1 (CREATE) **STOP**
 - BUW_EDITED_PARAMETER: N/A (EDIT) **STOP**
 - Layers (Status: WF4=C1_M020 / WF3=N/A) **STOP**
 - Saved Orientations **STOP**
- Quality Section
 - General Quality Status
 - Model Setup
 - Model Units: (MLT) [Convert to mm, g, sec](#)
 - Accuracy: 0.005, absolute [Convert to 0.005, absolute](#)
 - Material: ULTRAFORM H2320 [Apply material](#)
 - Regeneration
 - Insert mode off: true
 - Display
 - Cross Sections: (Name, Location, Type)
 - Misc
 - Family tables (Existance, Content)
 - Classification
 - Model Category: rd_plasticpart [Apply classification](#)
 - Layer Status: C1_M020 [Reset layer status](#)

Part and Assembly

- **Parameterquery**
- **Parameter**
- **Layer**
- **Orientation**
- **Feature**
- **Relation**
- **Units**
- **Model setup**
- **Combinations states**
- **Layer states**
- **Annotations**
- **Dimensions**
- **Simp Reps**
- **Material**
- **Run mapkey**
- **Run ModelCHECK**

Drawing

- **Parameterquery**
- **Parameter**
- **Layer**
- **Drawing setup**
- **Drawing Program**
- **Drawing note**
- **Run mapkey**
- **Run ModelCHECK**

Contact information



Contact: Florin Tudose,
su@buw-soft.de

Homepage: <http://www.buw-soft.de/su>